

ABERDEEN

BROWN COUNTY SOUTH DAKOTA

SANBORN MAP CO. NEW YORK

1929

Copyright © 1929 by The Sanborn Map Co.

All information furnished on this map was obtained from the South Dakota Department of Interior, Bureau of Land Management, and the Office of the Surveyor-General, State of South Dakota. The State of South Dakota is not responsible for the accuracy of the information furnished on this map. The State of South Dakota is not responsible for the accuracy of the information furnished on this map.

OLF COURSE



CORRECTION RECORD				
REV. NO.	DATE	ATTACHED BY	DATE ATTACHED	REMARKS
1	12-20	J. B. S. G.		

Sanborn Map Co. New York

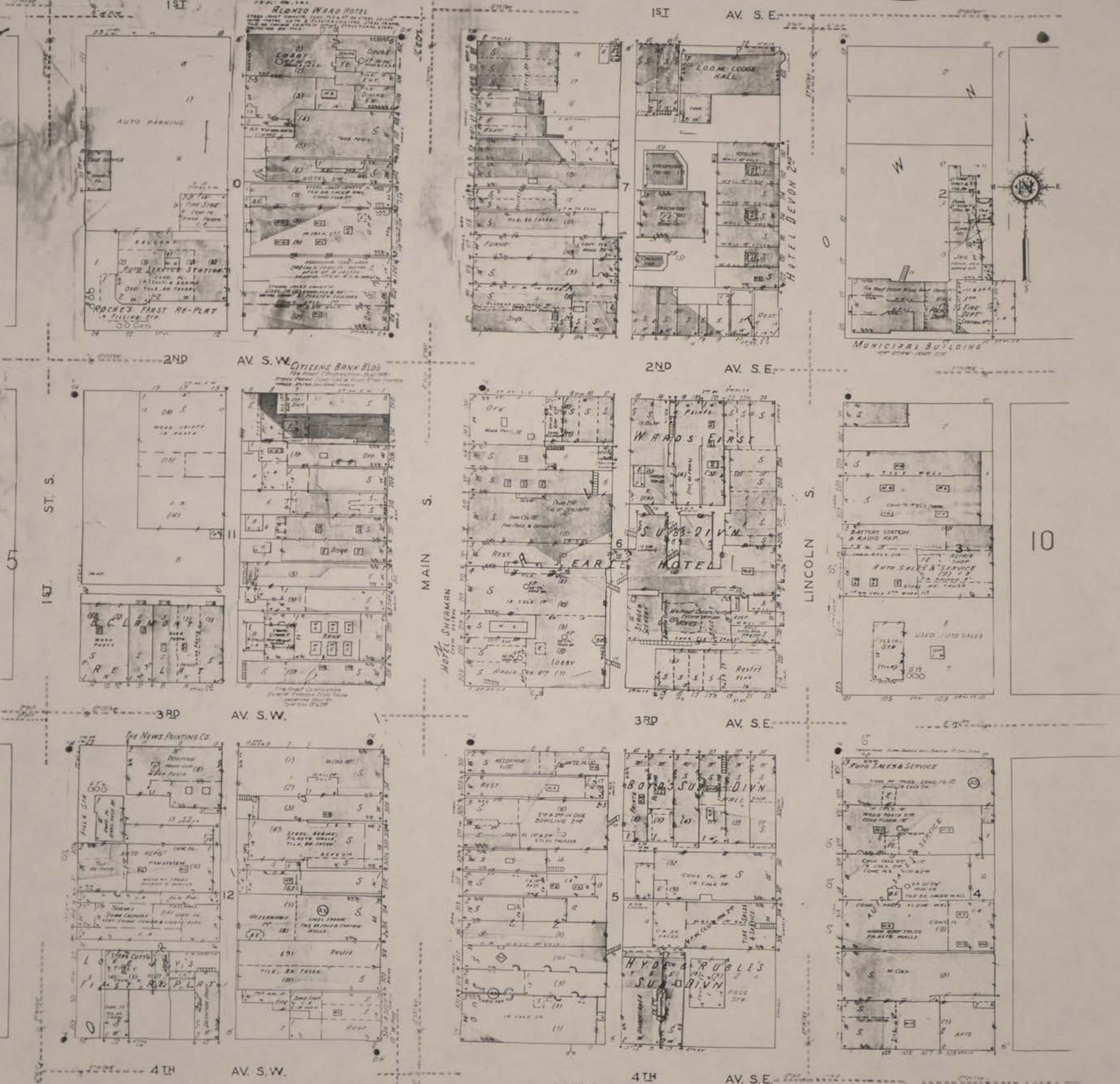
A BRICKS
SOUTH DAKOTA, BROWN COUNTY
NEW RECORD, OCTOBER, 1960
CITY OF ABERDEEN

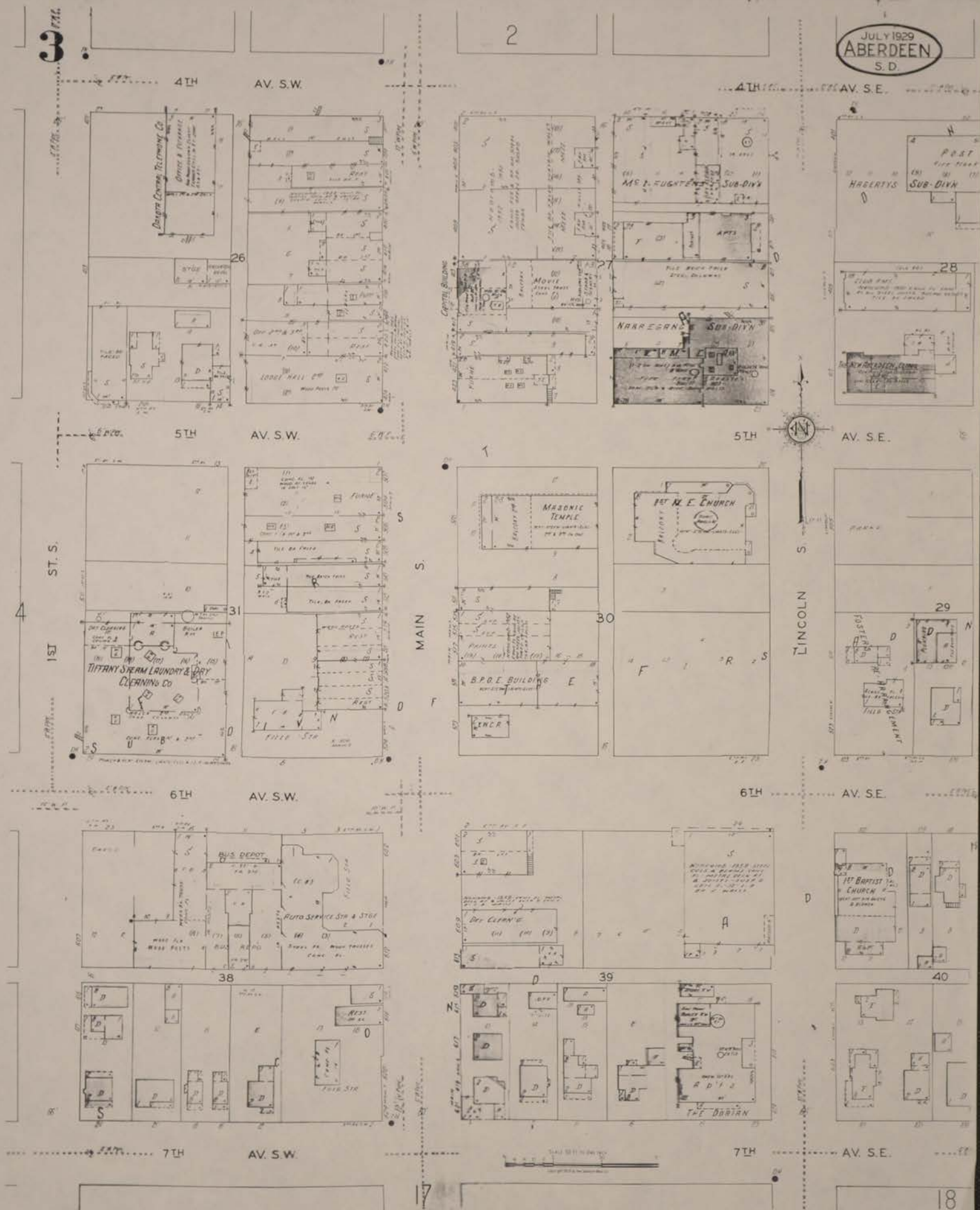
POPULATION: 14,175 (1950) U.S. Census
ETHNOLOGY: Practically entirely A. S.
TOPOGRAPHY: Level
STREETS: Approximately 50% streets underground.
WATER SUPPLY: Municipal system. Gravity flow. Abundant ground water. City well field. Total population supplied by 220,000 gallons per day. 11,000,000 U.S. G. P. 2.0. Distribution. Average depth to water 30 to 40 ft. with an average of 37 ft. Average water consumption 100,000 gal. per day.
FIRE DEPT.: Public owned with 4 engine fire trucks, 3 engines.
FIRE ALARM: Communication system. 12 underground conduits and 12 underground valves.
HOODING: Wood shingles permitted unless fire hazard.
FIRE LIMITS: None.
CURT: None.

Scale 1000 feet to one inch (Approx.)

ADDITIONAL INDEX, OCTOBER, 1952

STREETS	Sheet	SPECIALS	Sheet
Abraham Lincoln Blvd. S.E. 400-1132	38	Abraham Lincoln Blvd. S.E. 400-1132	38
Burton Ave. N.E. 400-1133	38	Burton Ave. N.E. 400-1133	38
Clark Ave. N.E. 400-1134	38	Clark Ave. N.E. 400-1134	38
Conover St. W. 400-1135	38	Conover St. W. 400-1135	38
Davis St. W. 400-1136	38	Davis St. W. 400-1136	38
Edwards St. W. 400-1137	38	Edwards St. W. 400-1137	38
Franklin St. W. 400-1138	38	Franklin St. W. 400-1138	38
Geary St. W. 400-1139	38	Geary St. W. 400-1139	38
Grant St. W. 400-1140	38	Grant St. W. 400-1140	38
Harrison St. W. 400-1141	38	Harrison St. W. 400-1141	38
Jefferson St. W. 400-1142	38	Jefferson St. W. 400-1142	38
Kearney St. W. 400-1143	38	Kearney St. W. 400-1143	38
Lincoln St. W. 400-1144	38	Lincoln St. W. 400-1144	38
Madison St. W. 400-1145	38	Madison St. W. 400-1145	38
Monroe St. W. 400-1146	38	Monroe St. W. 400-1146	38
Nichols St. W. 400-1147	38	Nichols St. W. 400-1147	38
Oliver St. W. 400-1148	38	Oliver St. W. 400-1148	38
Park St. W. 400-1149	38	Park St. W. 400-1149	38
Roosevelt St. W. 400-1150	38	Roosevelt St. W. 400-1150	38
St. Louis St. W. 400-1151	38	St. Louis St. W. 400-1151	38
Taylor St. W. 400-1152	38	Taylor St. W. 400-1152	38
Union St. W. 400-1153	38	Union St. W. 400-1153	38
Washington St. W. 400-1154	38	Washington St. W. 400-1154	38
Wayne St. W. 400-1155	38	Wayne St. W. 400-1155	38
Zimmerman St. W. 400-1156	38	Zimmerman St. W. 400-1156	38





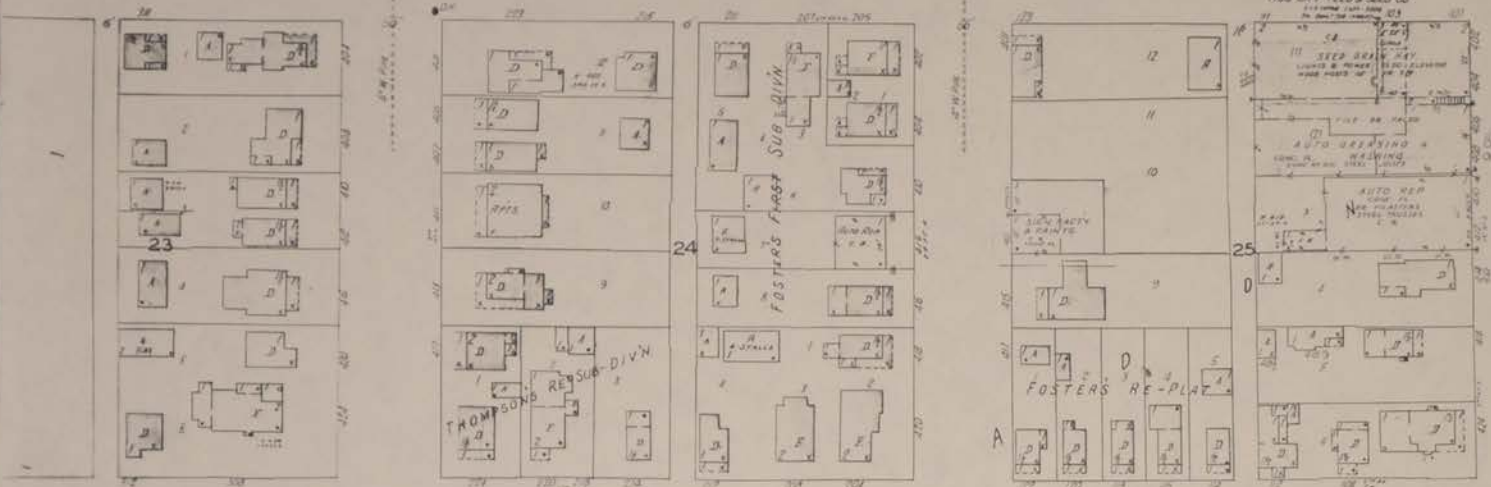
4

5

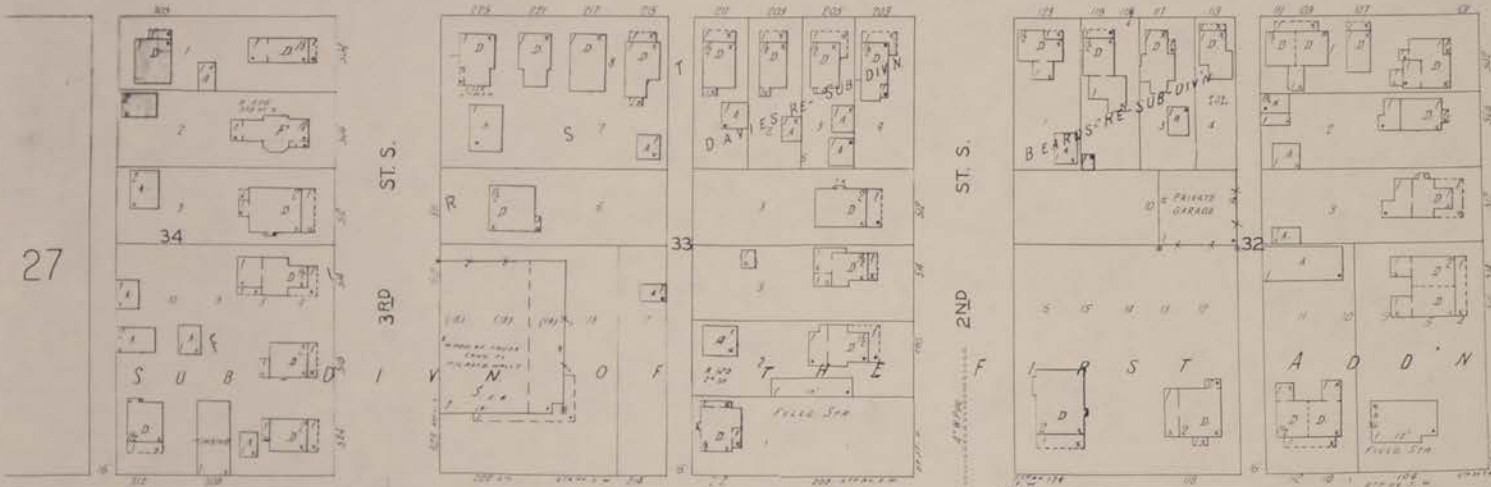
JULY 1929
ABERDEEN
S.D.

4

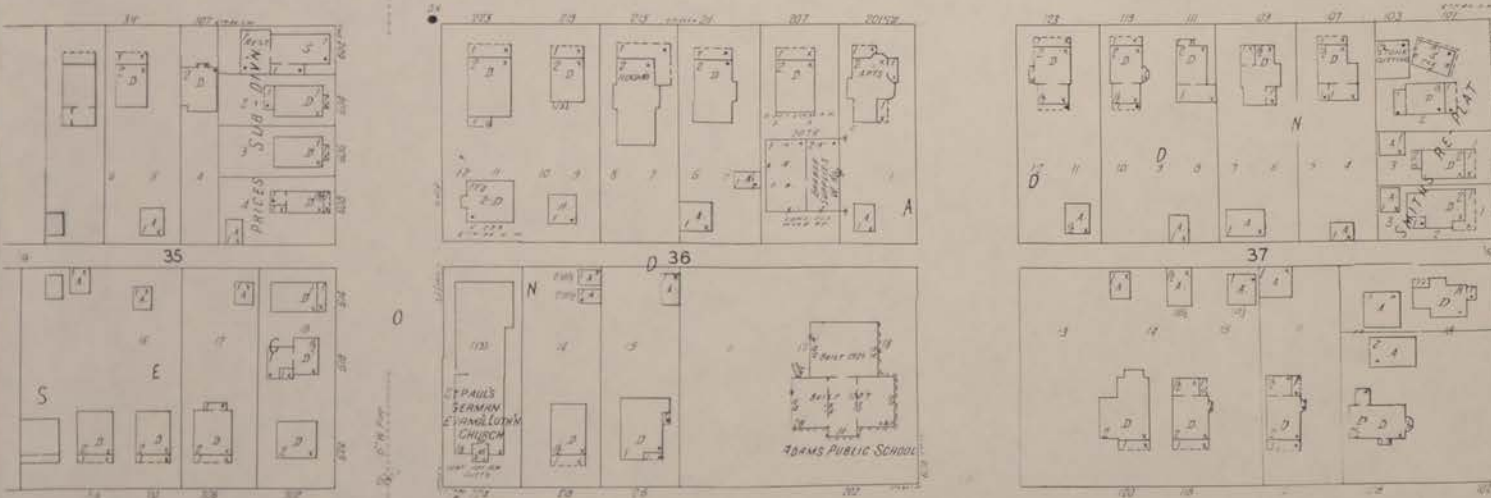
4TH AV. S.W.



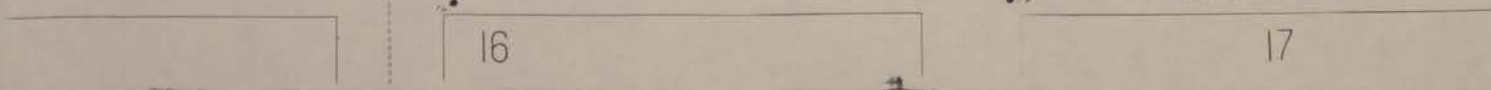
5TH AV. S.W.



6TH AV. S.W.



7TH AV. S.W.



ST. S.
3RD

ST. S.
2ND

ST. S.
1ST



16

17

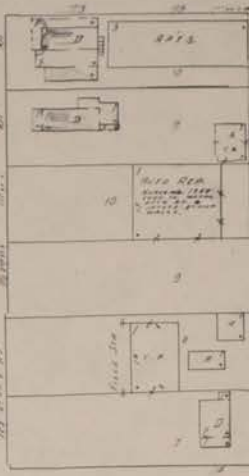
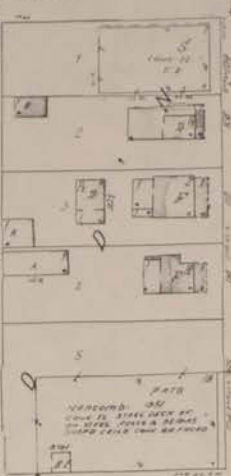
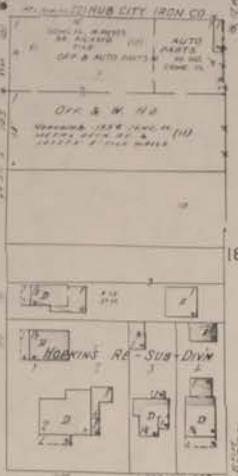
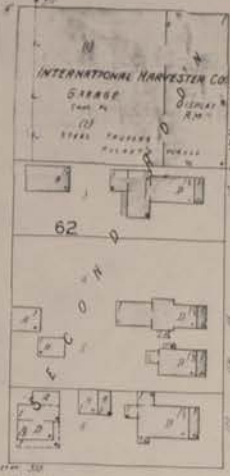
5 26

6

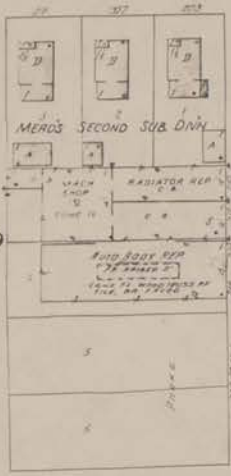
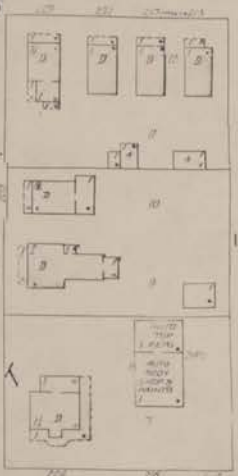
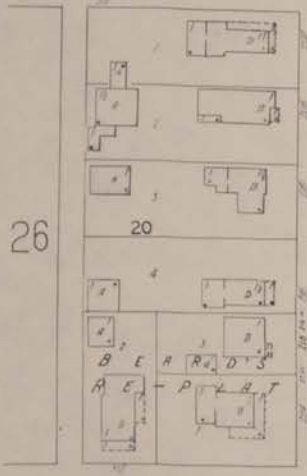
JULY 1929
ABERDEEN
S.D.

5

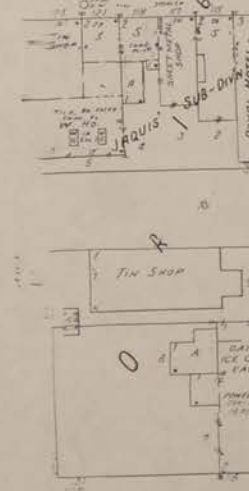
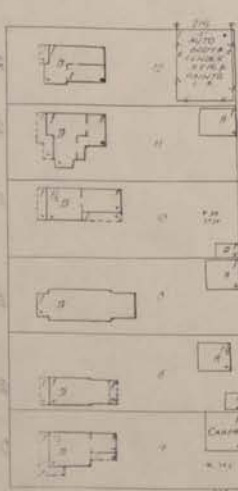
1ST AV. S.W.



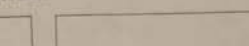
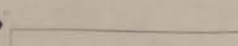
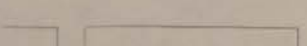
2ND AV. S.W.



3RD AV. S.W.



4TH AV. S.W.



4

JULY 1929
ABERDEEN
S.D.

1/4' H. S. E.

6

7

RAILROAD RY. SE

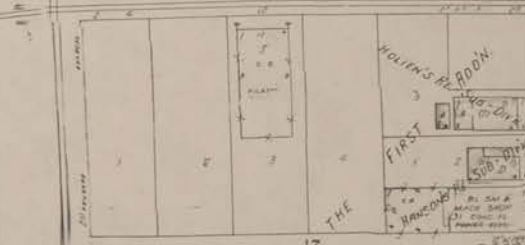
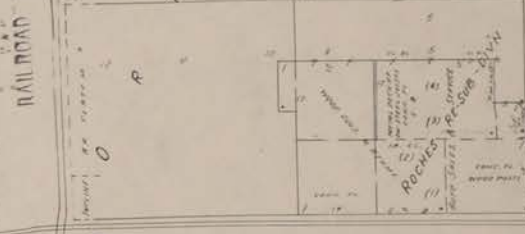
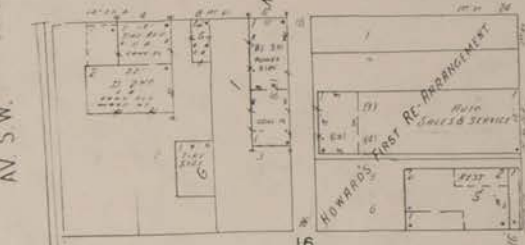
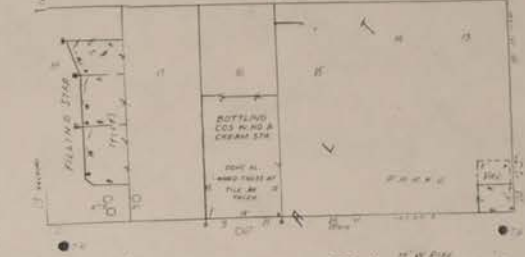
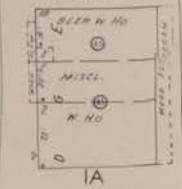
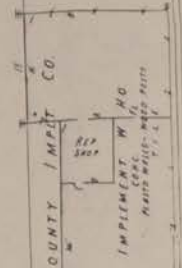
MAIN S

6

1/4' H. N. E.

MAIN N

29



2

1ST ST. S

1ST ST. S

AV. S. W.

RAILROAD

1ST ST. S

28

1ST ST. N

2ND ST. S

2ND ST. S

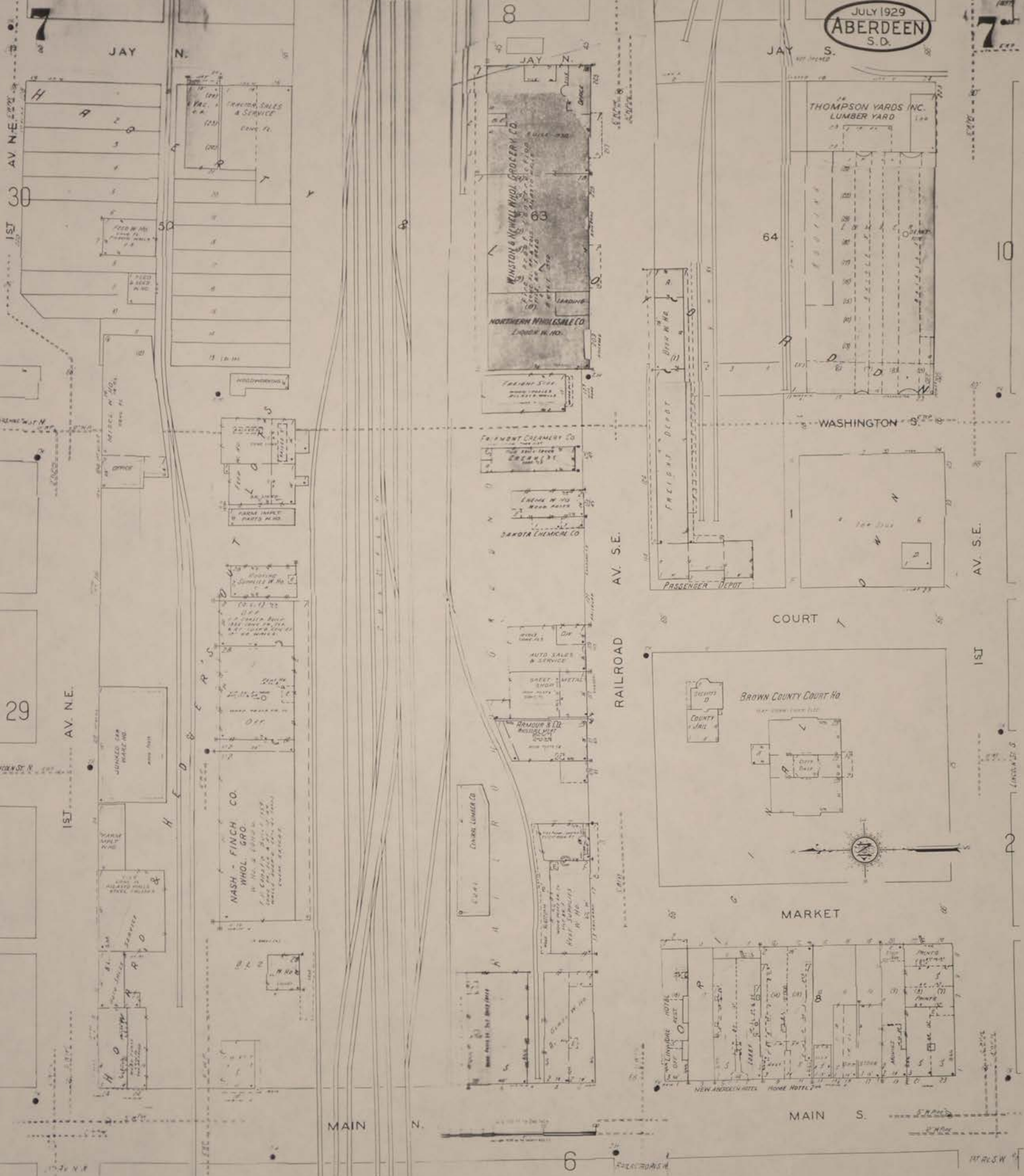
5

3RD ST. S

3RD ST. S

26

JULY 1929
ABERDEEN
S.D.



JAY N.

8

JAY S.

7

1ST AV. N.E.

29

1ST AV. N.E.

NASH - FINCH CO.
WHOL. GRO.

Winston & Finch Wholesale Grocery Co.
Northern Wholesale Co.
Lumber W. Ho.

FRUIT CREAMERY CO.
CREAMERY

LABRA W. HO.
BEER PALE

SARDIA CHEMICAL CO.

AUTO SALES & SERVICE
BERRY METAL SHOP

ARMOUR & CO.
MEAT MARKET

CHAS. LUMBER CO.

NEW ABERDEEN HOTEL
HOME HOTEL

THOMPSON YARDS INC.
LUMBER YARD

64

WASHINGTON S.

AV. S.E.

RAILROAD

COURT

BROWN COUNTY COURT HO

MARKET

AV. S.E.

1ST

2

MAIN N.

6

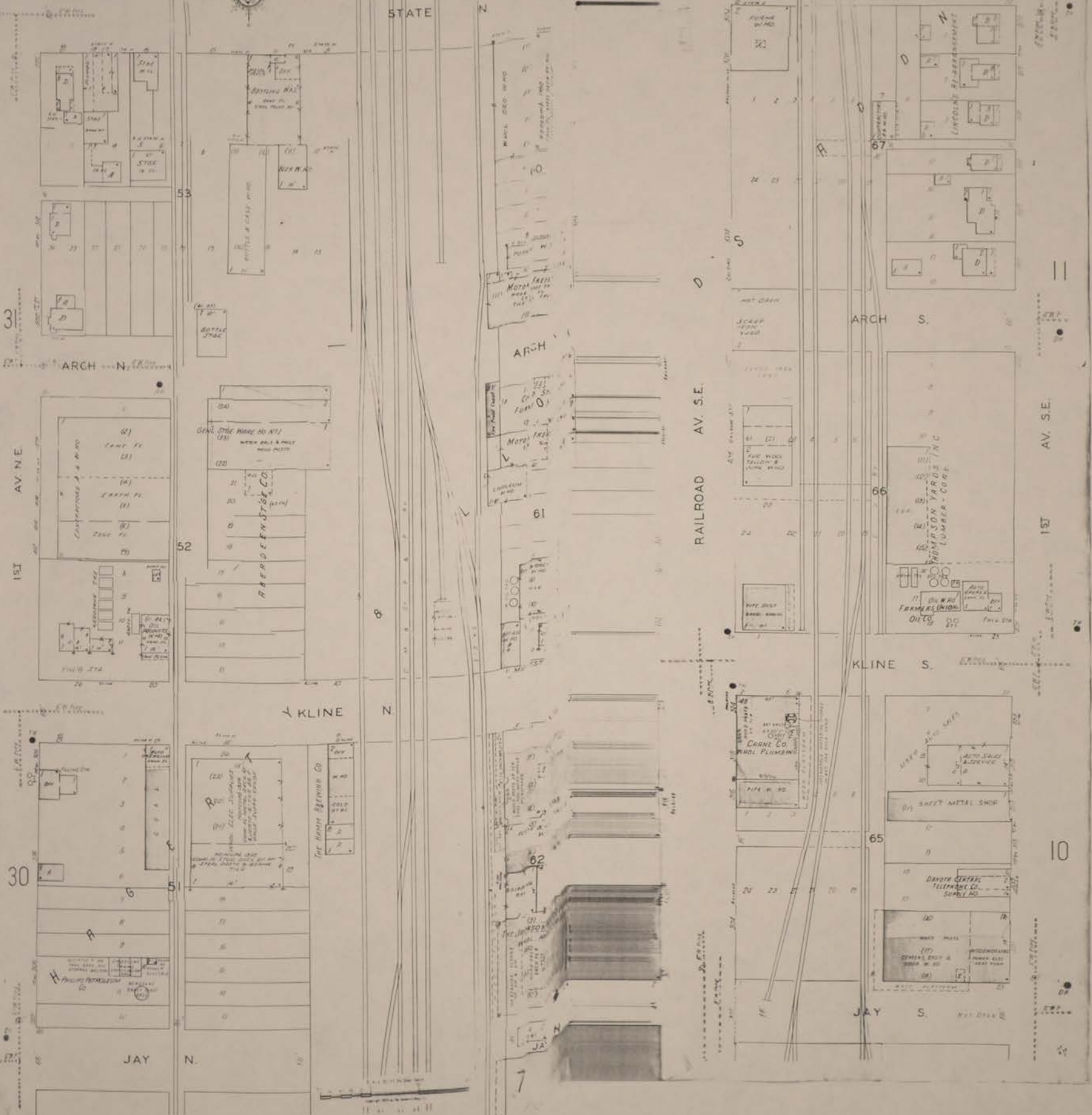
MAIN S.

1ST S.W.

8

JULY 1929
ABERDEEN
S.D.

8



3

151

30

9

61

62

7

RAILROAD AV. S.E.

ARCH S.

KLINE S.

JAY S.

AV. S.E.

151

10

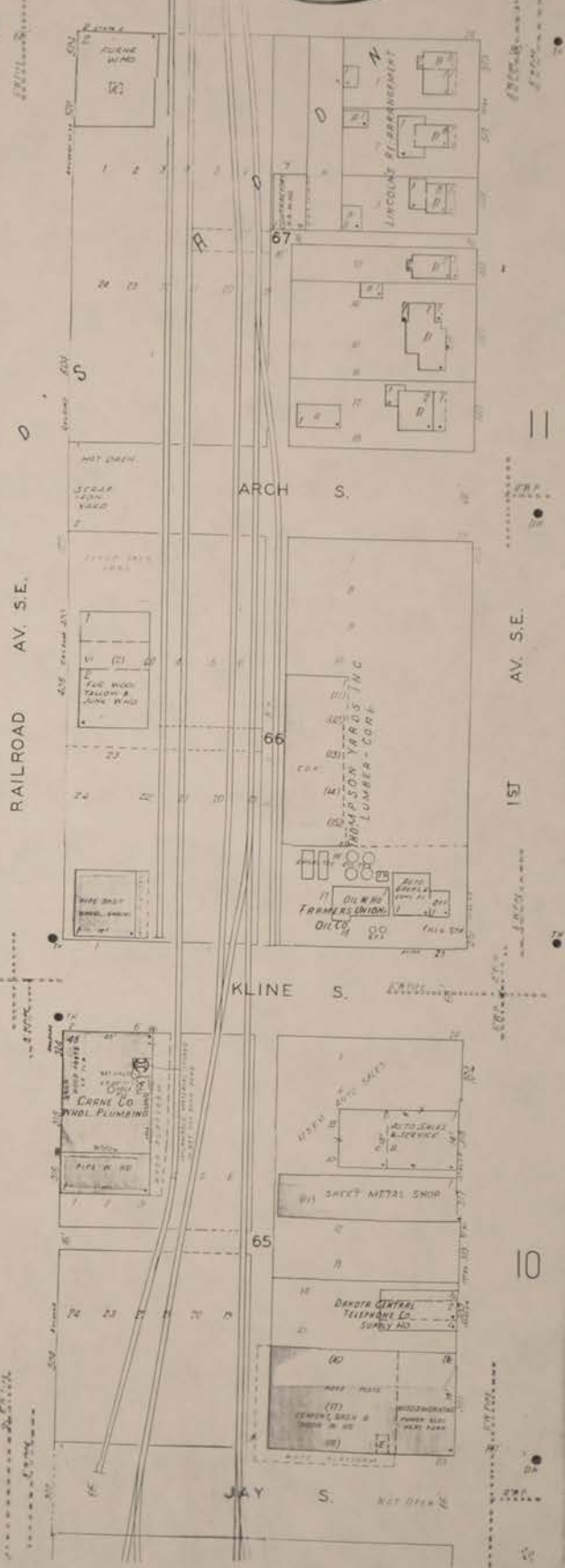
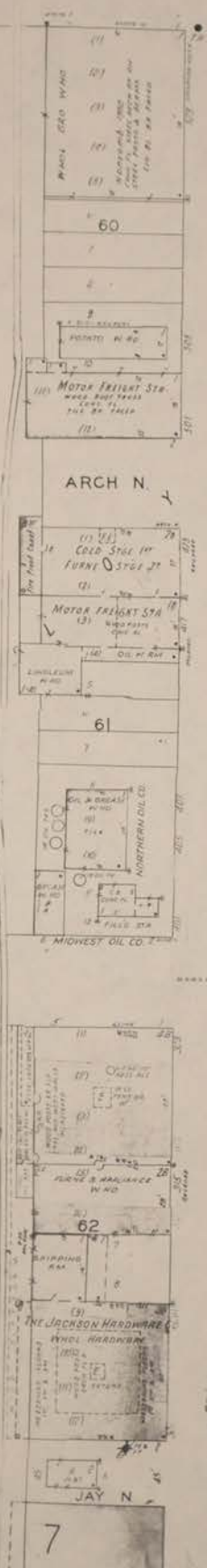
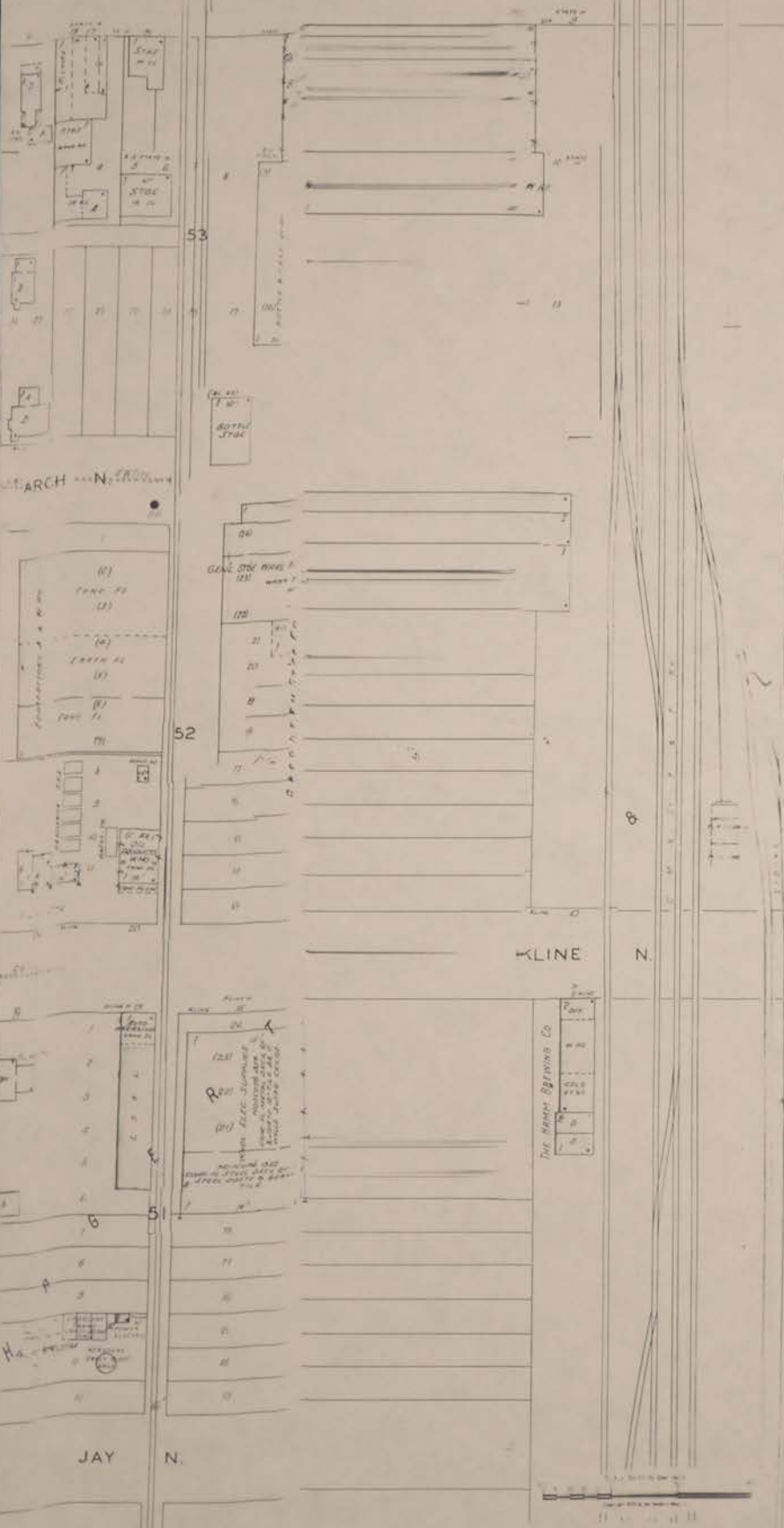
JULY 1929
ABERDEEN
S.D.

STATE N

STATE S

9

8



RAILROAD AV. S.E.

AV. S.E.

DAKOTA N.

DAKOTA S.

JULY 1929
ABERDEEN
S.D.

PENNSYLVANIA N.

PENNSYLVANIA S.

LLOYD N.

LLOYD S.

STATE N.

STATE S.

AV. N.E.

RAILROAD AV. S.E.

AV. S.E.

1ST

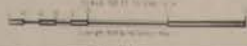
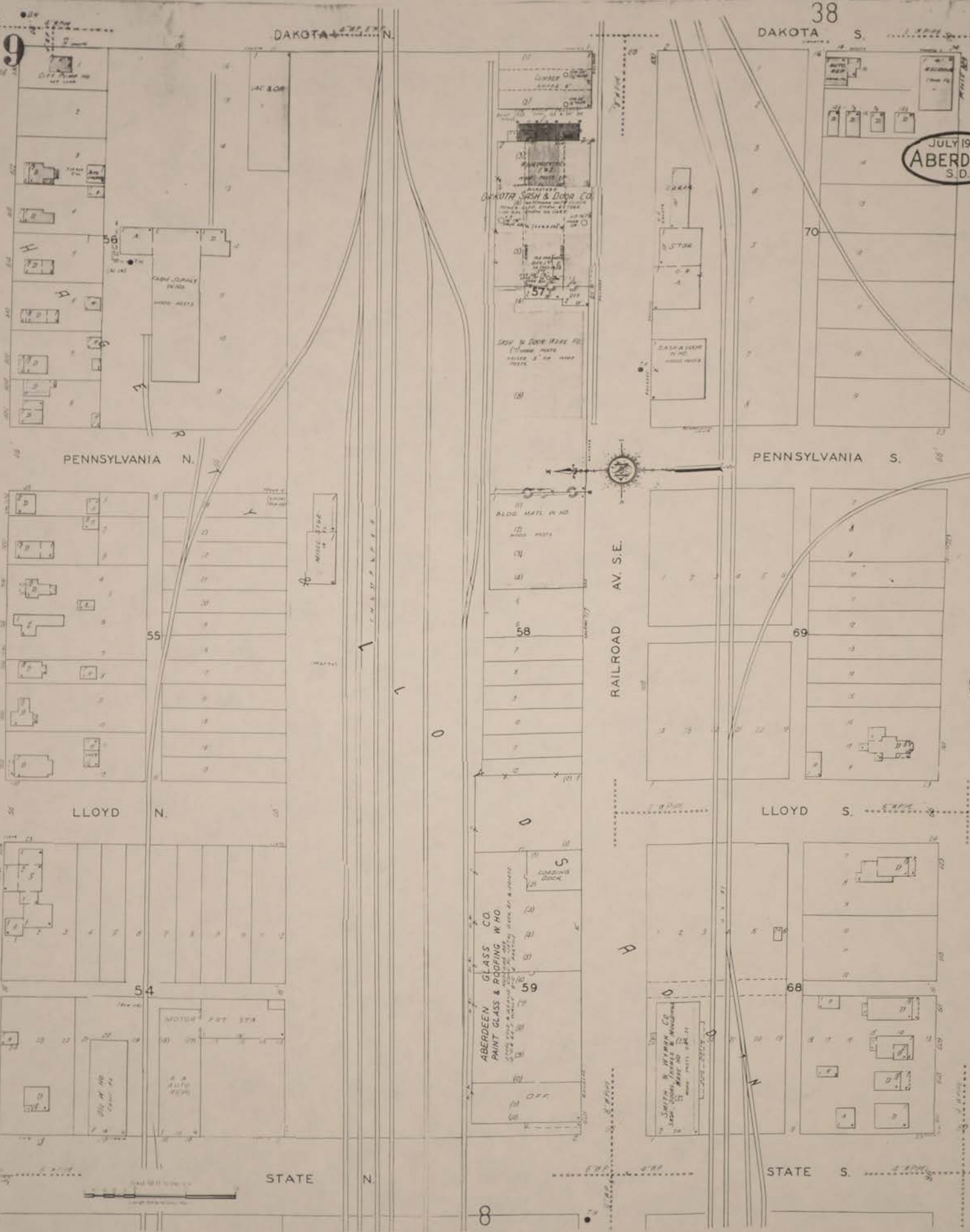
1ST

31

11

32

14



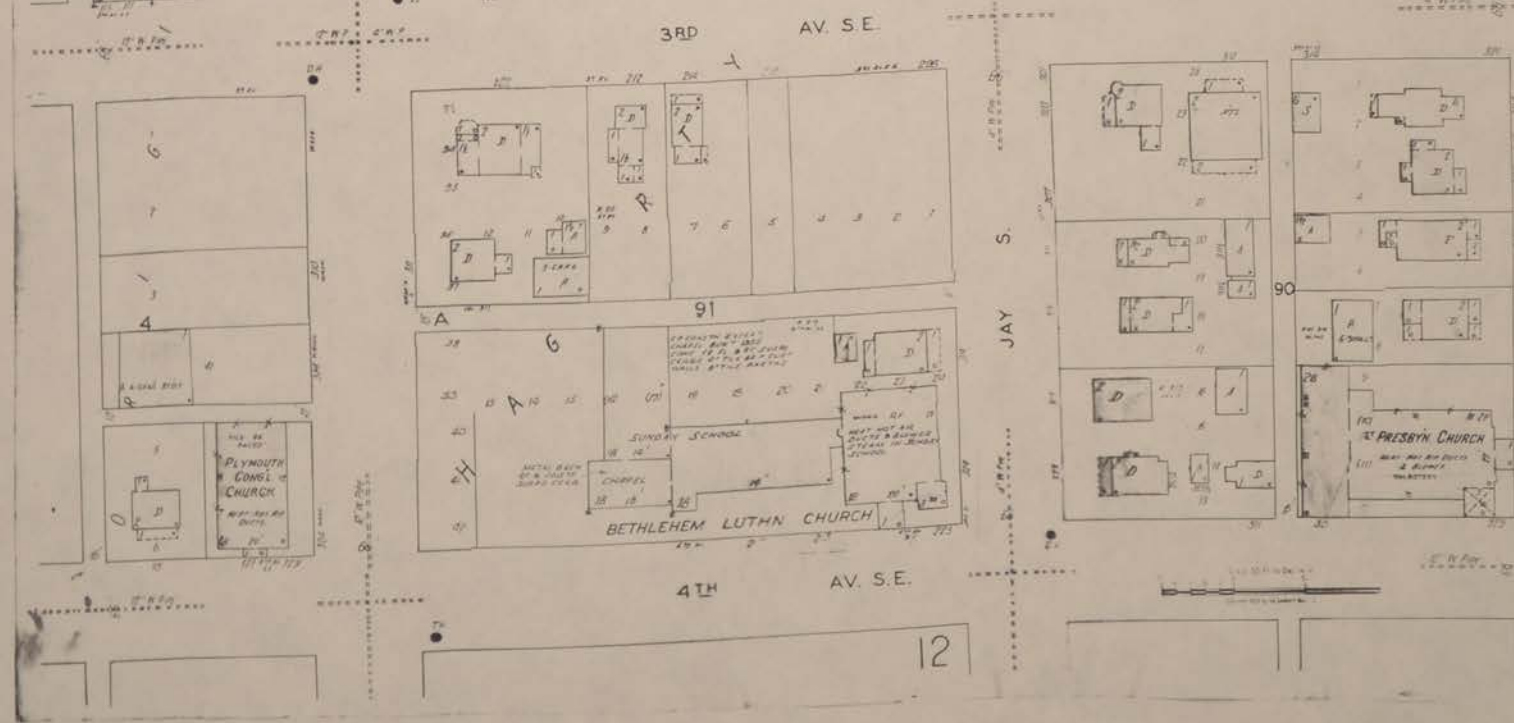
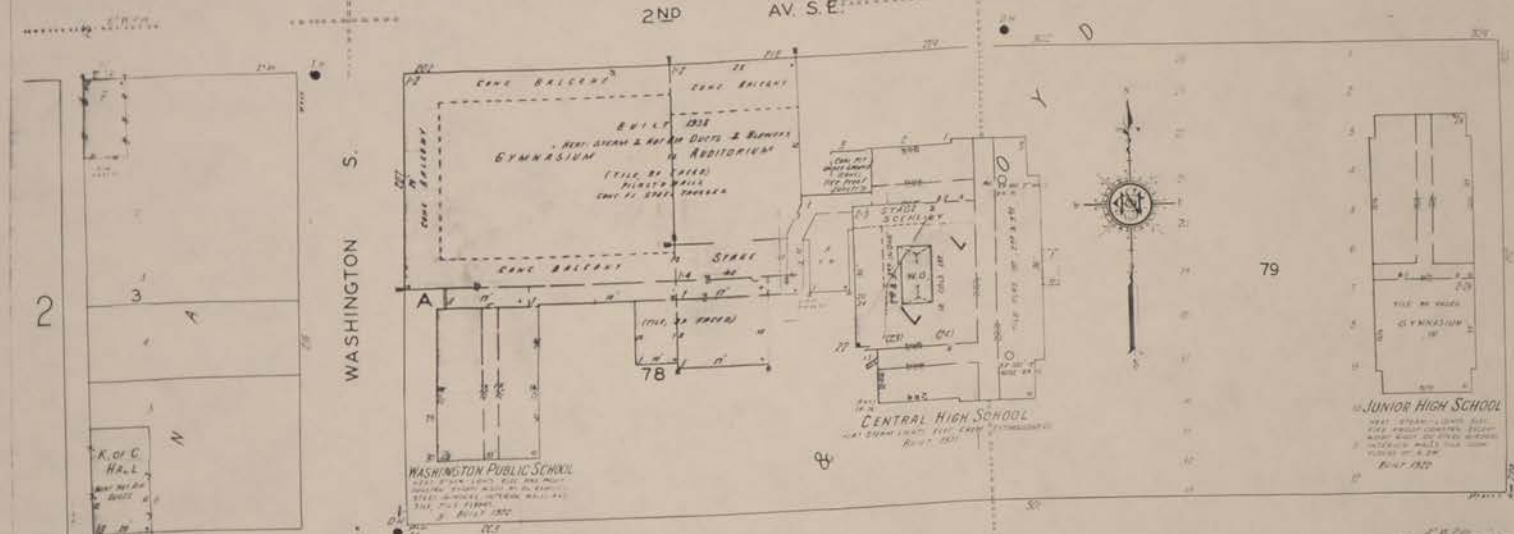
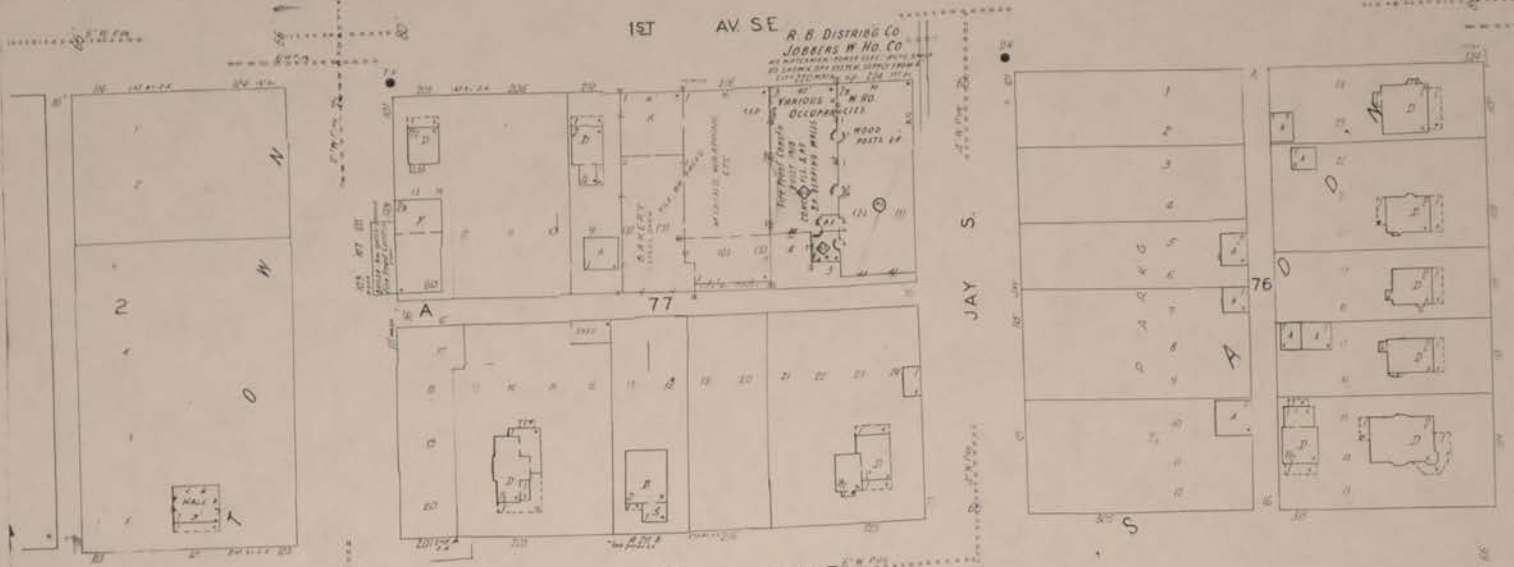
COURT ST
10

7

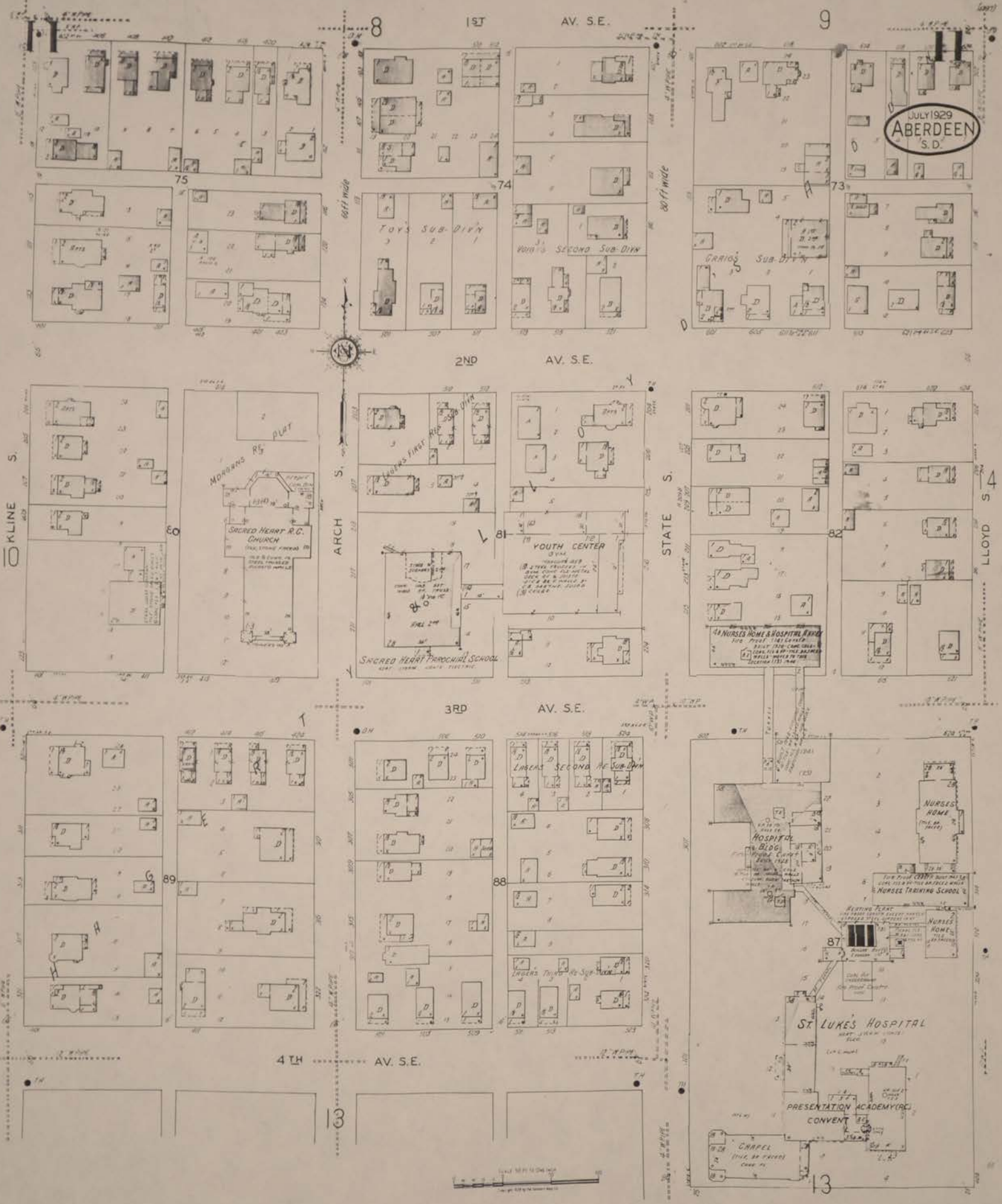
8

JULY 1929
ABERDEEN
S.D.

10



JULY 1929
ABERDEEN
S. D.



8

1ST

AV. S.E.

9

75

74

73

left wide

80 ft wide

2ND

AV. S.E.

KLINE S.

MORGANS PLAT

ARCH S.

STATE S.

LLOYD S.

SACRED HEART R.C. CHURCH
100 S. 2ND AV. S.E.
1910

SACRED HEART PAROCHIAL SCHOOL
407 1/2 1ST AV. S.E.
1910

YOUTH CENTER
100 S. 2ND AV. S.E.
1910

44 NURSES HOME & HOSPITAL ANNEX
100 S. 2ND AV. S.E.
1910

3RD

AV. S.E.

89

88

LORENS SECOND AV. SUB-DIV

LORENS TOYS R.C. SUB-DIV

HOSPITAL BLDG
100 S. 2ND AV. S.E.
1910

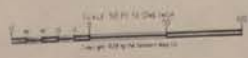
NURSES HOME
(100 S. 2ND AV. S.E.)

NURSES TRAINING SCHOOL

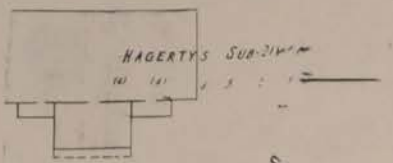
4TH AV. S.E.

13

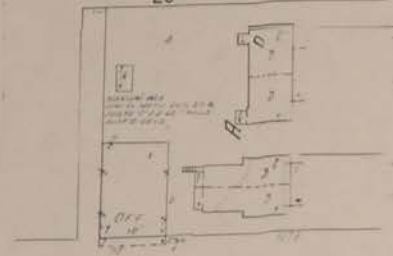
13



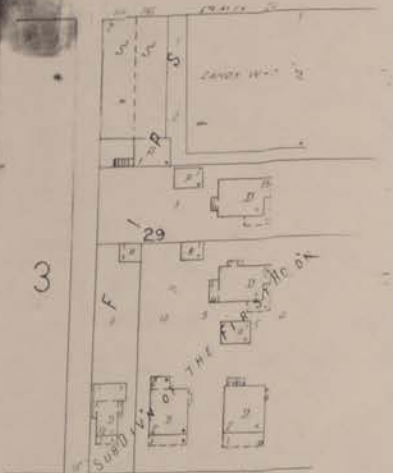
12



28

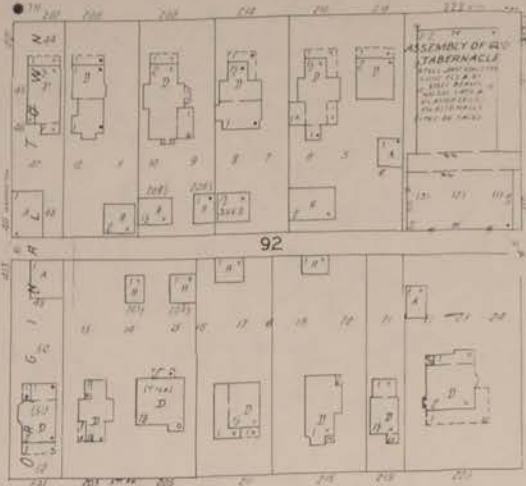


3



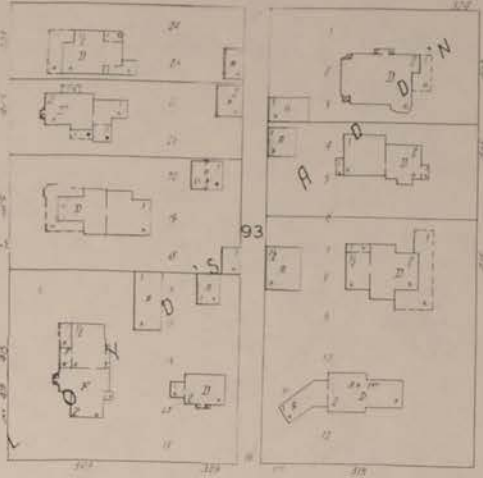
10

4TH AV. S.E.

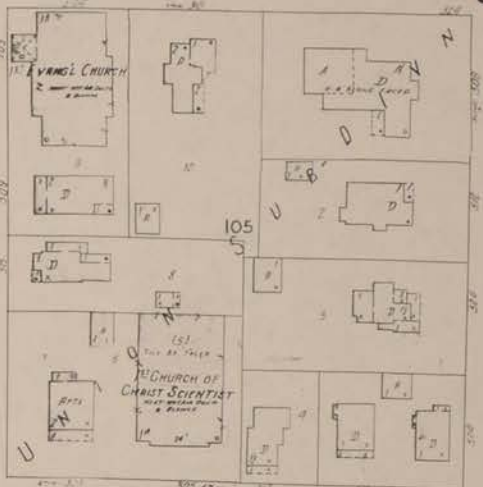
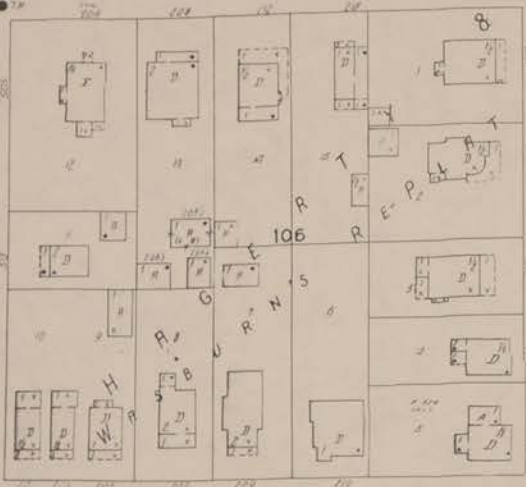


JULY 1929
ABERDEEN
S.D.

12



5TH AV. S.E.

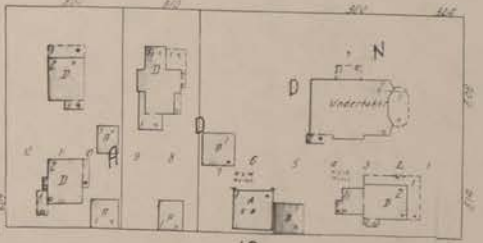
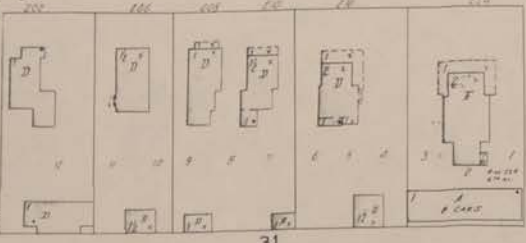


WASHINGTON S.

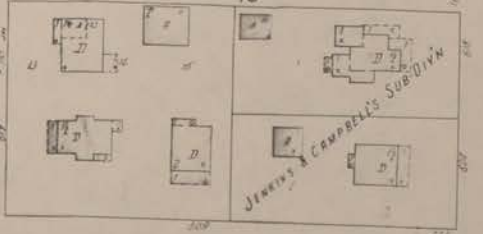
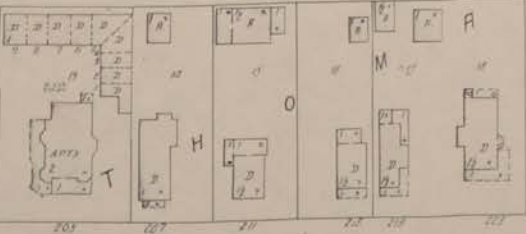
JAY S.

KLINE S.

6TH AV. S.E.



40



7TH AV. S.E.

18

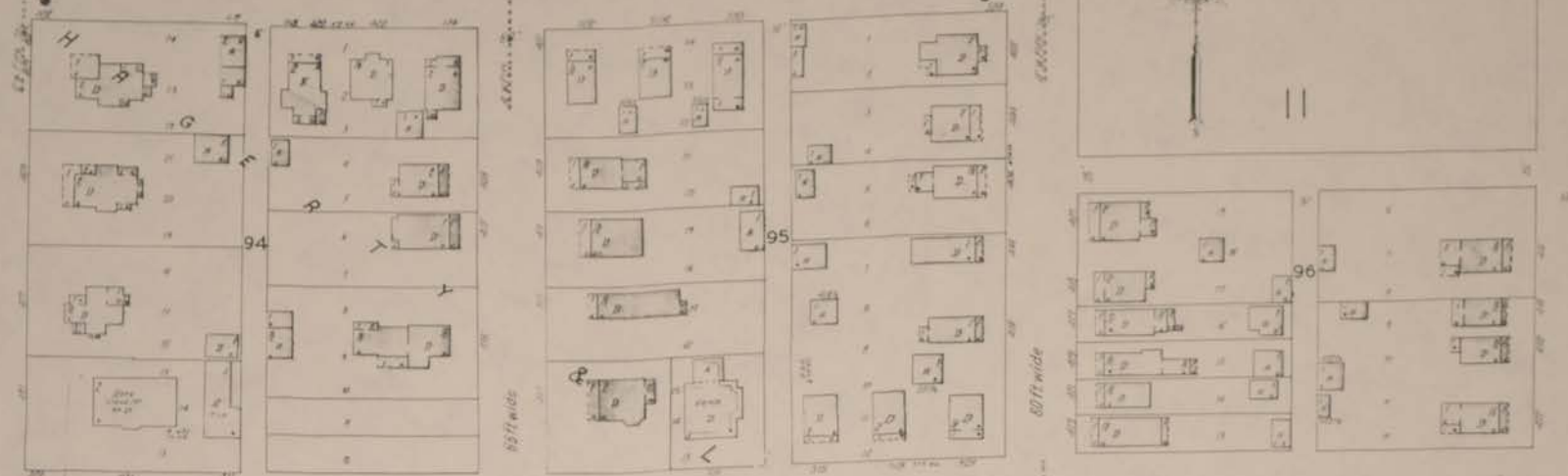
19

13

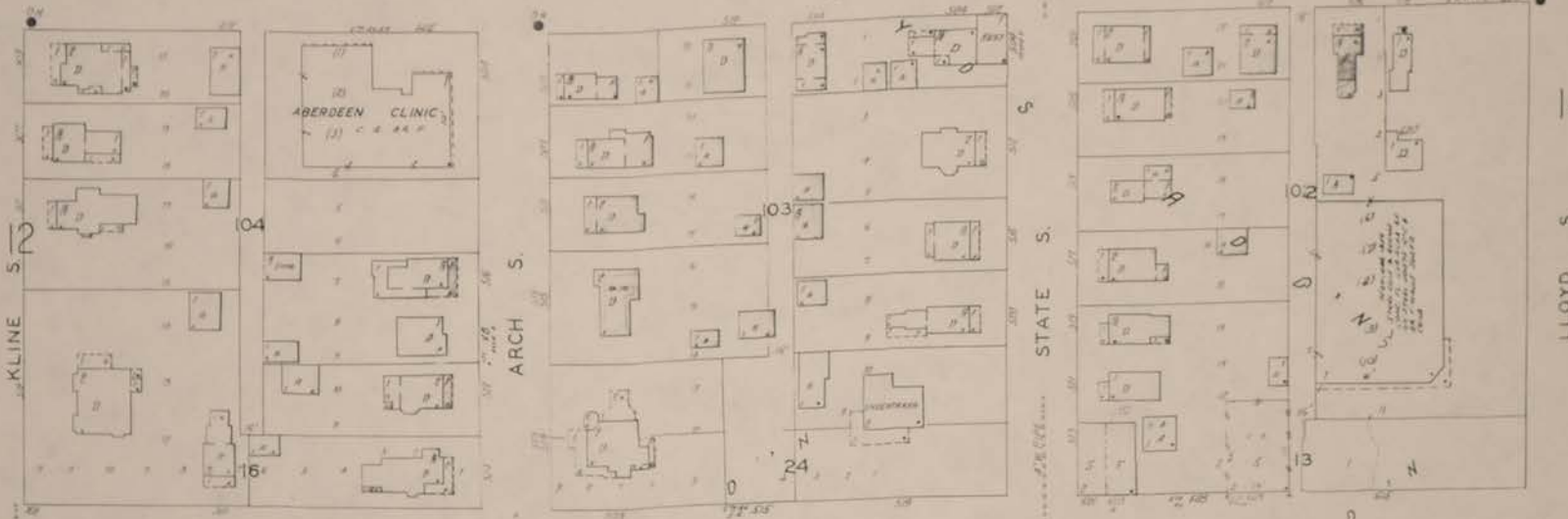
JULY 1929
ABERDEEN
S.D.

13

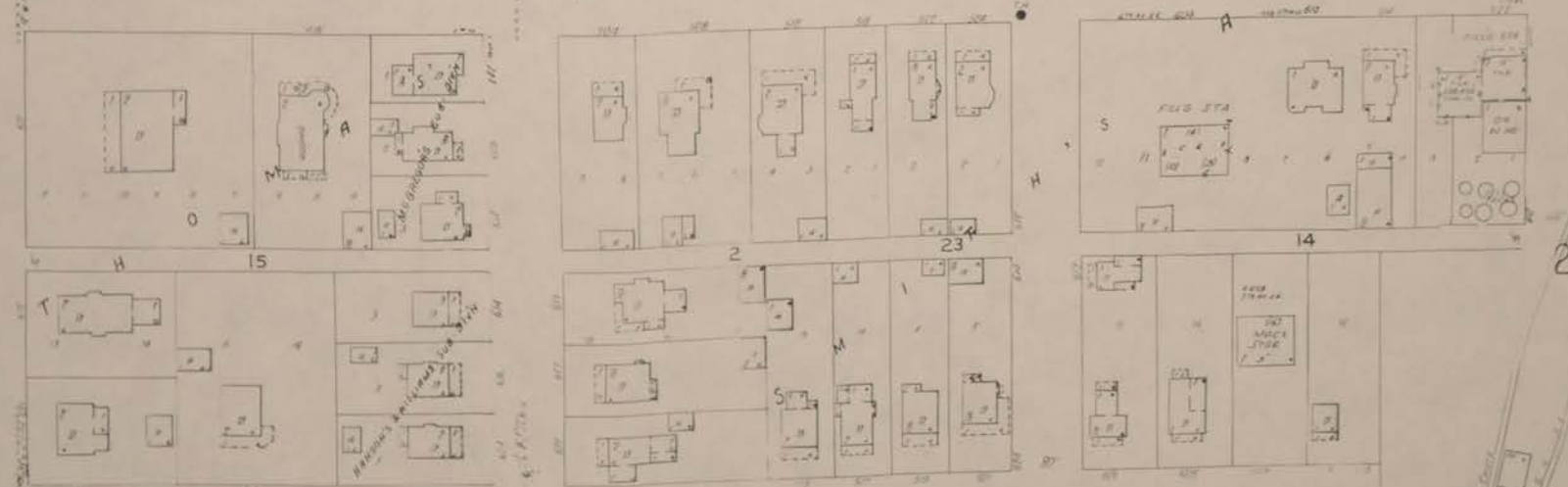
4TH AV. S.E.



5TH AV. S.E.



6TH AV. S.E.



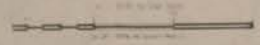
7TH AV. S.E.

19

14

LLOYD S

20



14

14

JULY 1929
ABERDEEN
S.D.

9 1ST AV. S.E.

2ND AV. S.E.

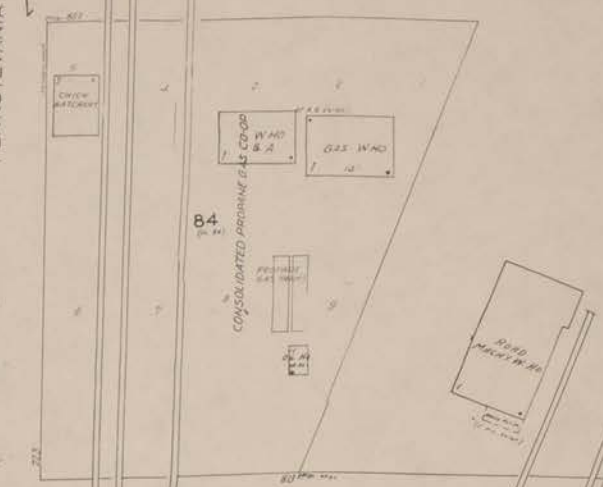
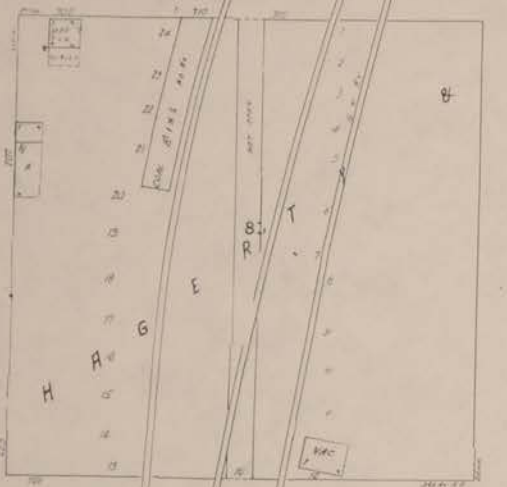
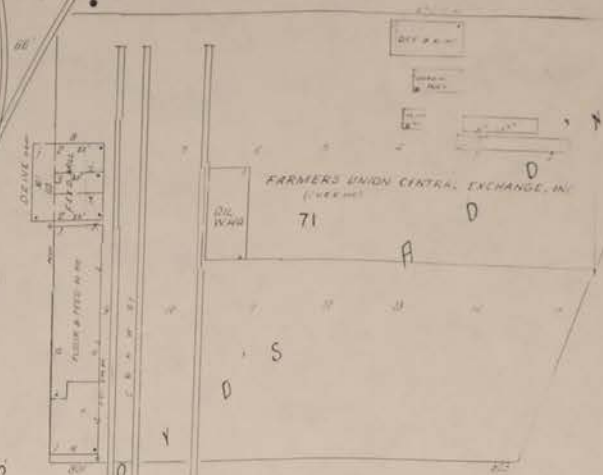
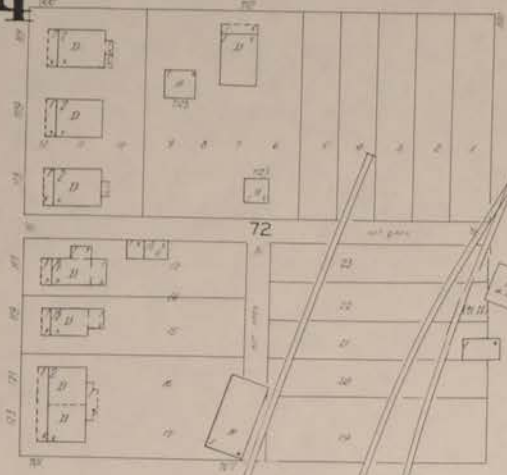
3RD AV. S.E.

38

15

LLOYD S.

PENNSYLVANIA



5TH AV. S.E.

5TH AV. S.E.

6TH 20 AV. S.E.

15

9TH AV. N.W.

8TH AV. N.W.

15

9TH AV. N.E.

8TH AV. N.W.

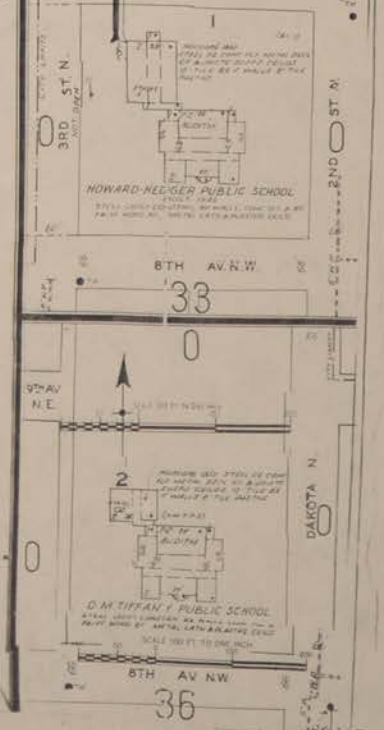
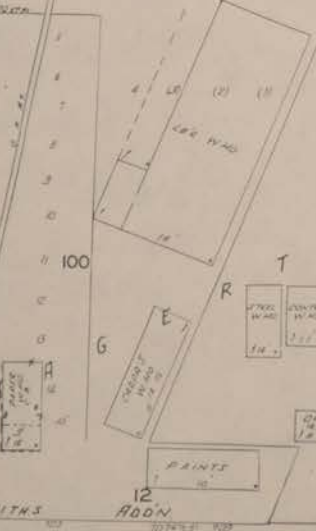
36

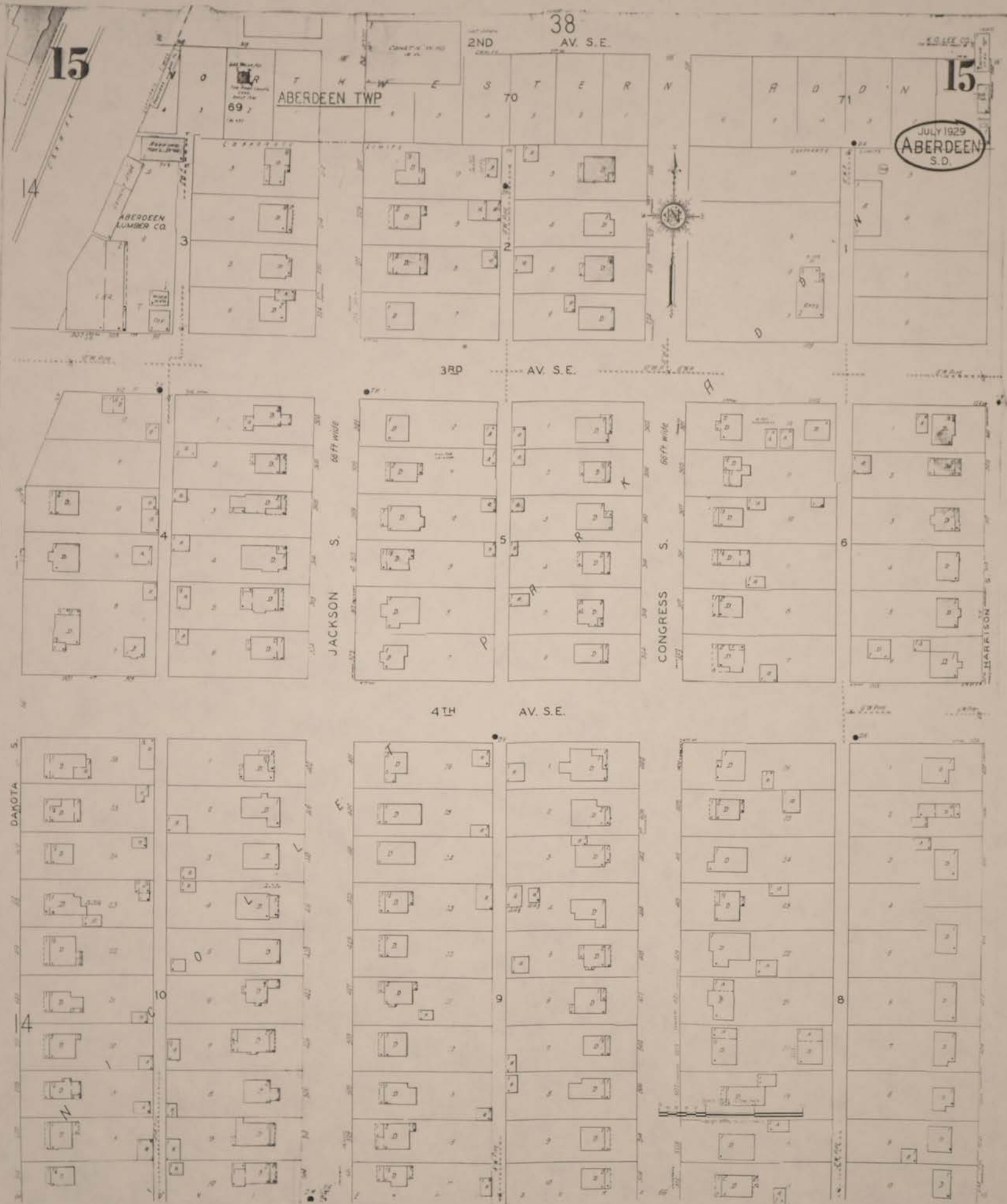
LLOYD S.

DAKOTA S.

2ND ST. N.

DAKOTA N.





15

15

38
AV. S.E.

ABERDEEN TWP

JULY 1929
ABERDEEN
S.D.

3RD AV. S.E.

4TH AV. S.E.

JACKSON S.
66 FT wide

CONGRESS S.
66 FT wide

HARRISON S.

DAROTA S.

14

8

69

70

71

4

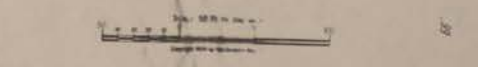
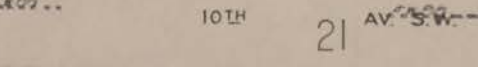
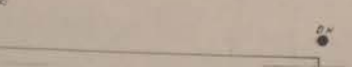
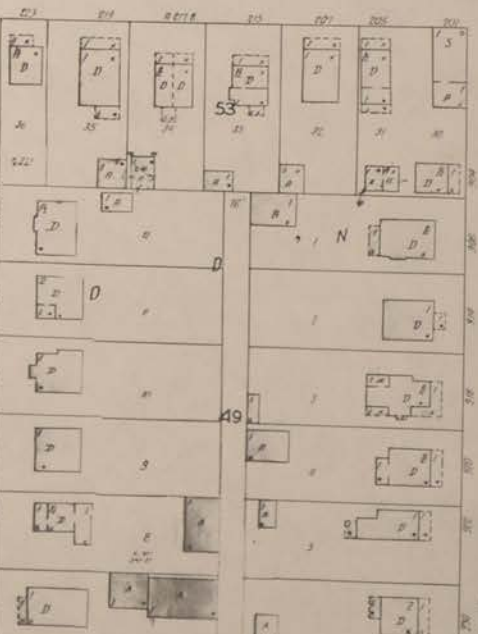
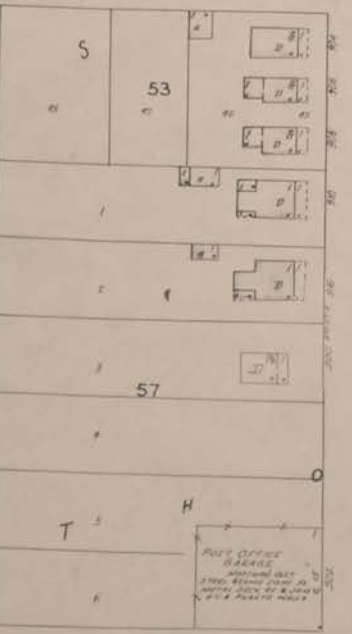
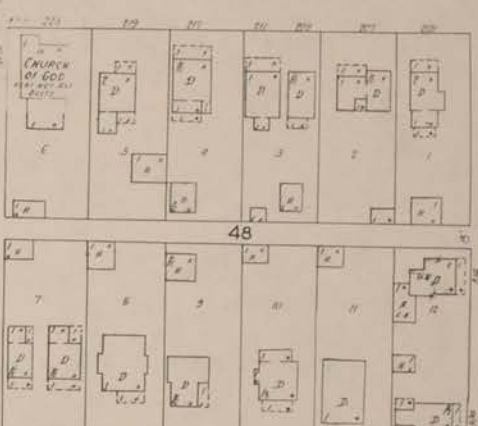
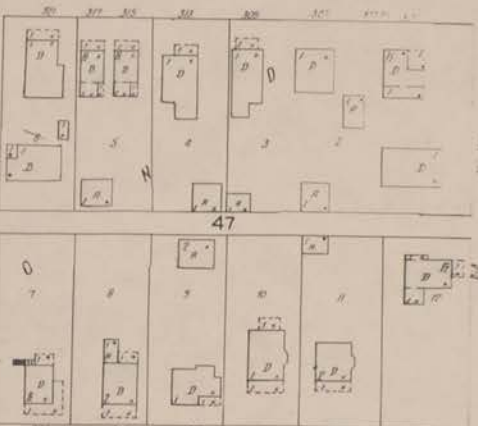
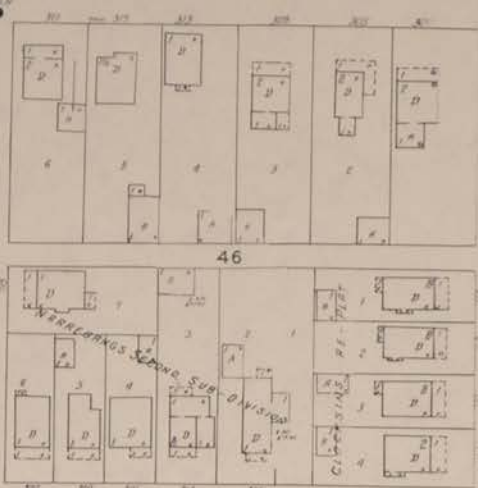
5

6

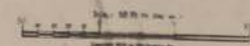
10

9

8



BRILLIANT HIGHWAY



17

4

7TH

AV. S.W.

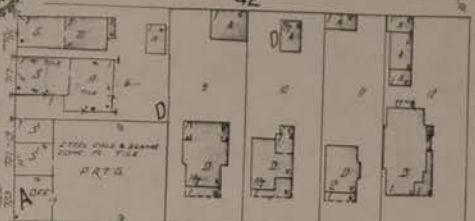
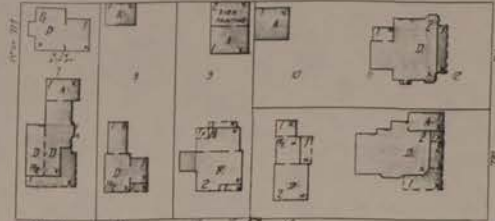
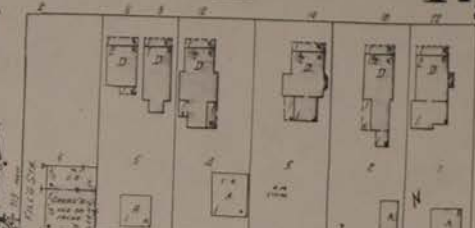
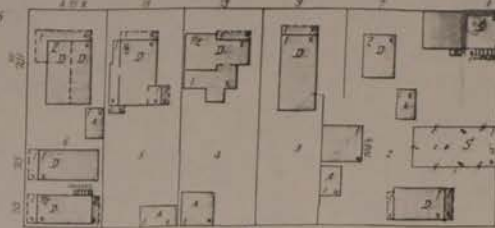
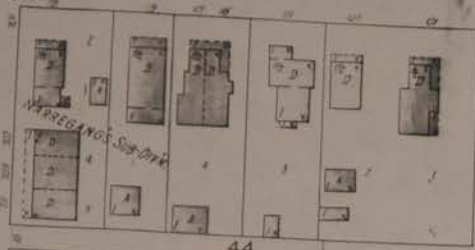
3

JULY 1929
ABERDEEN
S.D.

17

7TH

AV. S.E.

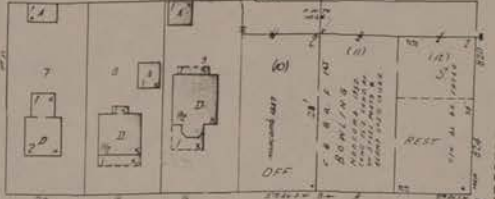
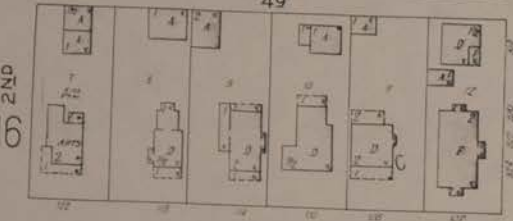
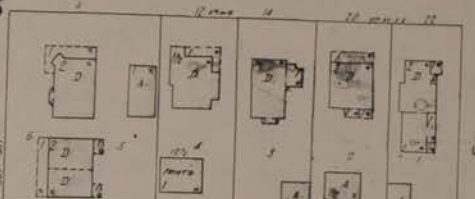
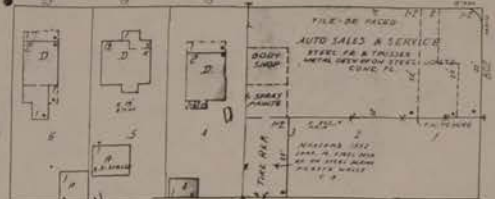
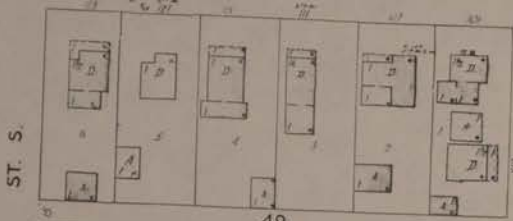


8TH

AV. S.W.

8TH

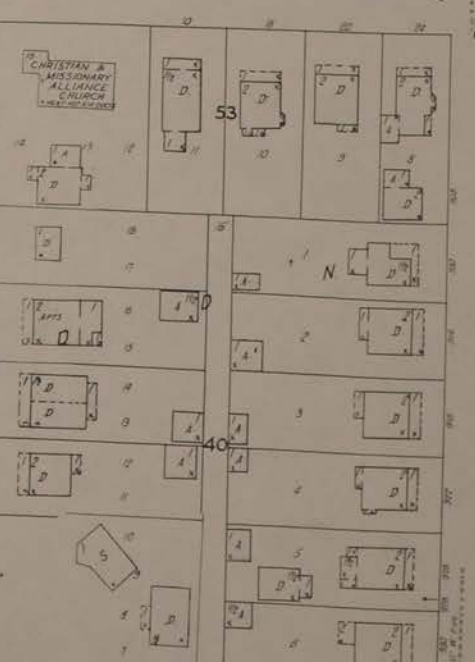
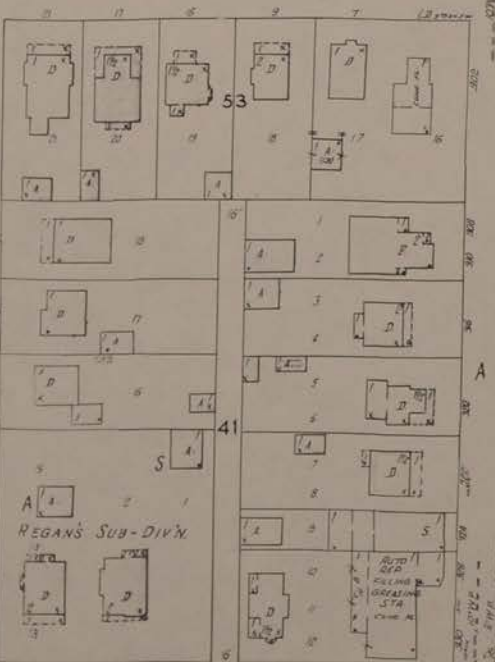
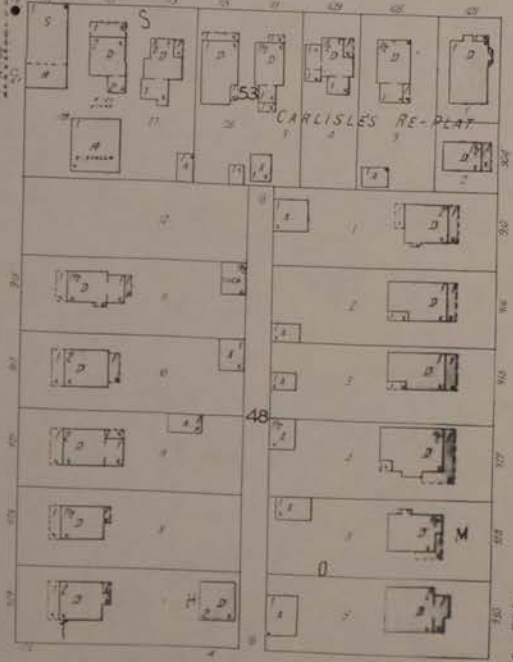
AV. S.E.



9TH AV. S.W.

9TH

AV. S.E.



10TH AV. S.W.

10TH

AV. S.E.

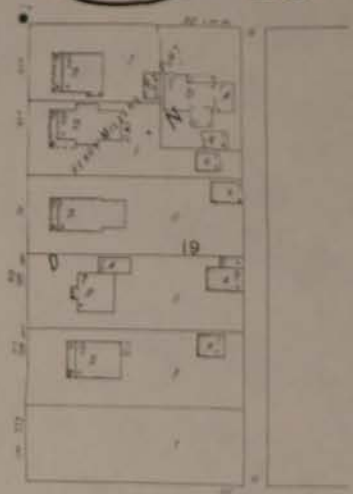
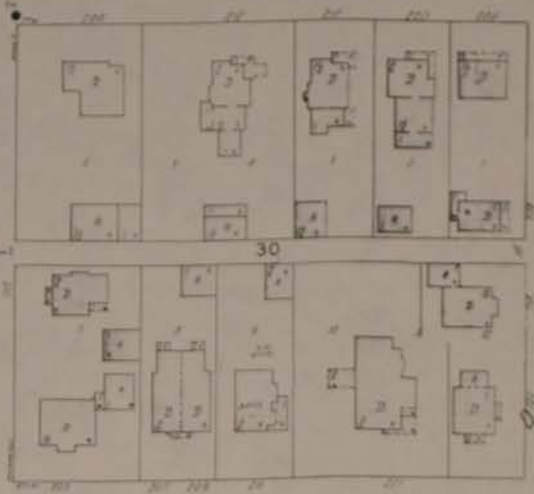
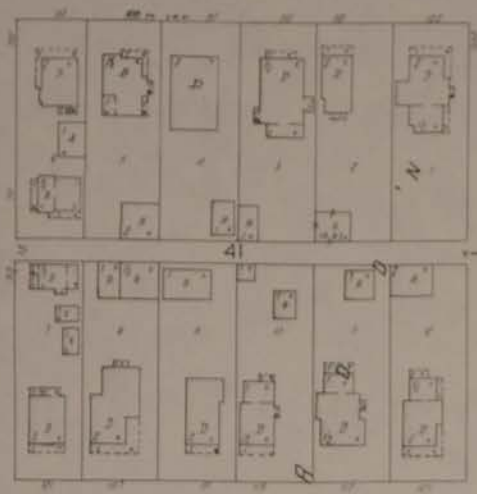
18

3

12

JUL 1929
ABERDEEN
S.D.

18

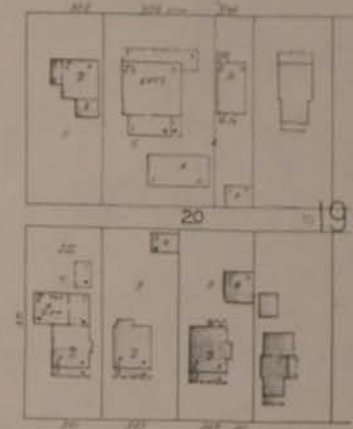
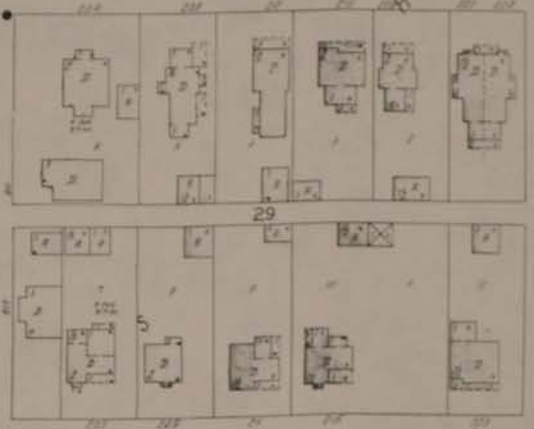
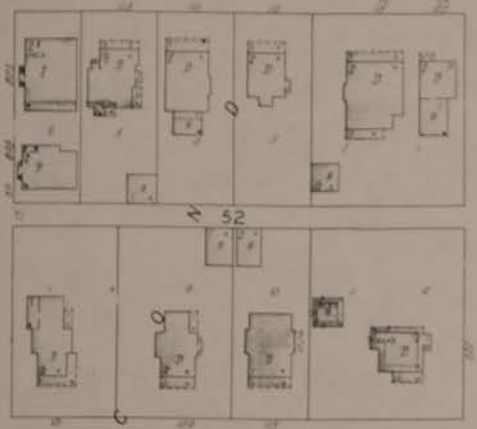


7TH AV. S.E.

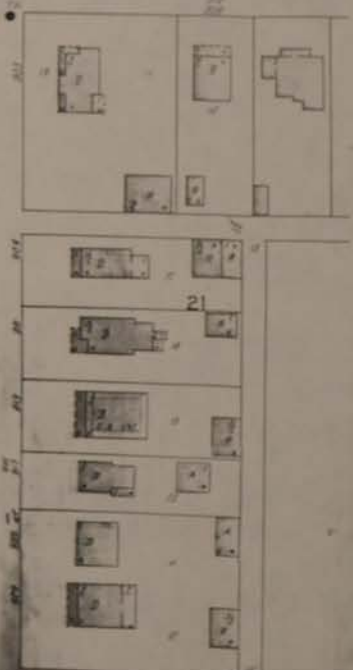
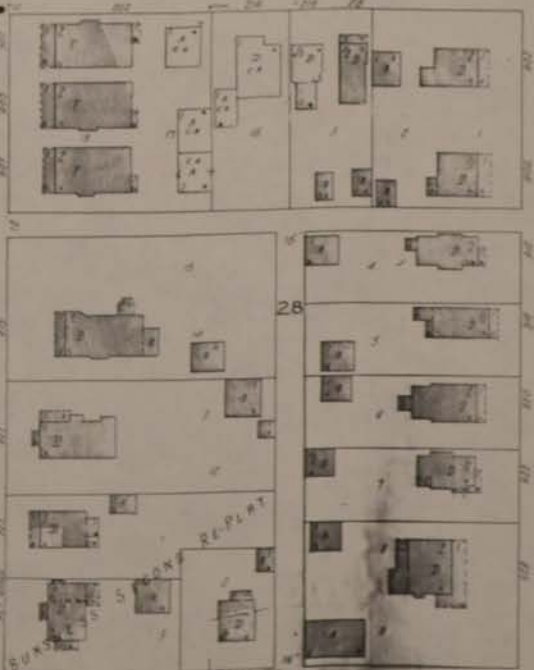
8TH AV. S.E.

17 S.

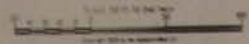
LINCOLN



9TH AV. S.E.



10TH AV. S.E. 23





NORTHERN NORMAL INDUSTRIAL SCHOOL
SCALE 100 FT. TO AN INCH

20

14

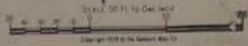
JULY 1929
ABERDEEN
S. D.

20

NICOLLET PRAY (1037)



25



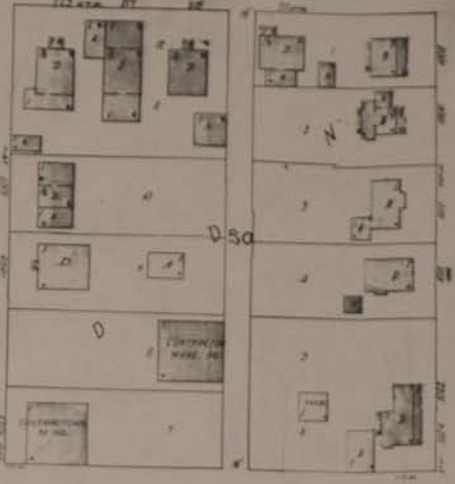
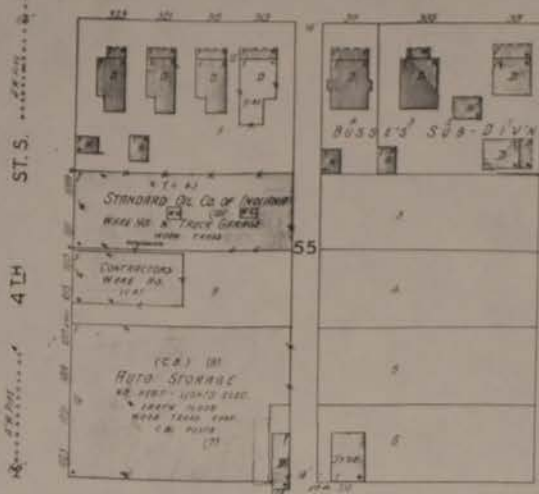
21

16

JULY 1929
ABERDEEN
S.D.

21

10TH ST. S.W.



11TH AV. S.W.

ST. S.

ST. S.

59

54

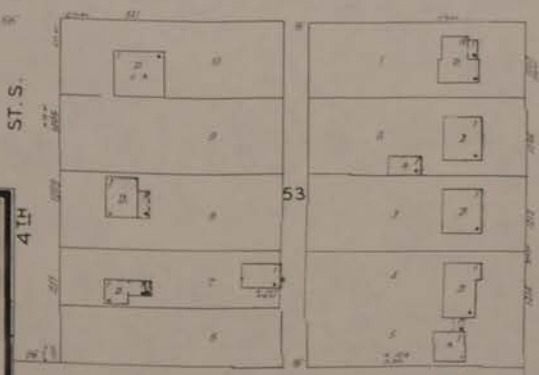
51

MINNEAPOLIS & ST. LOUIS RY.

3RD

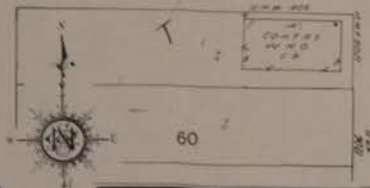
22

12TH AV. S.W.

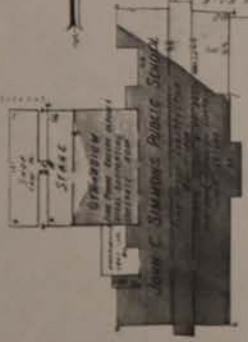


13TH AV. S.W.

21



60

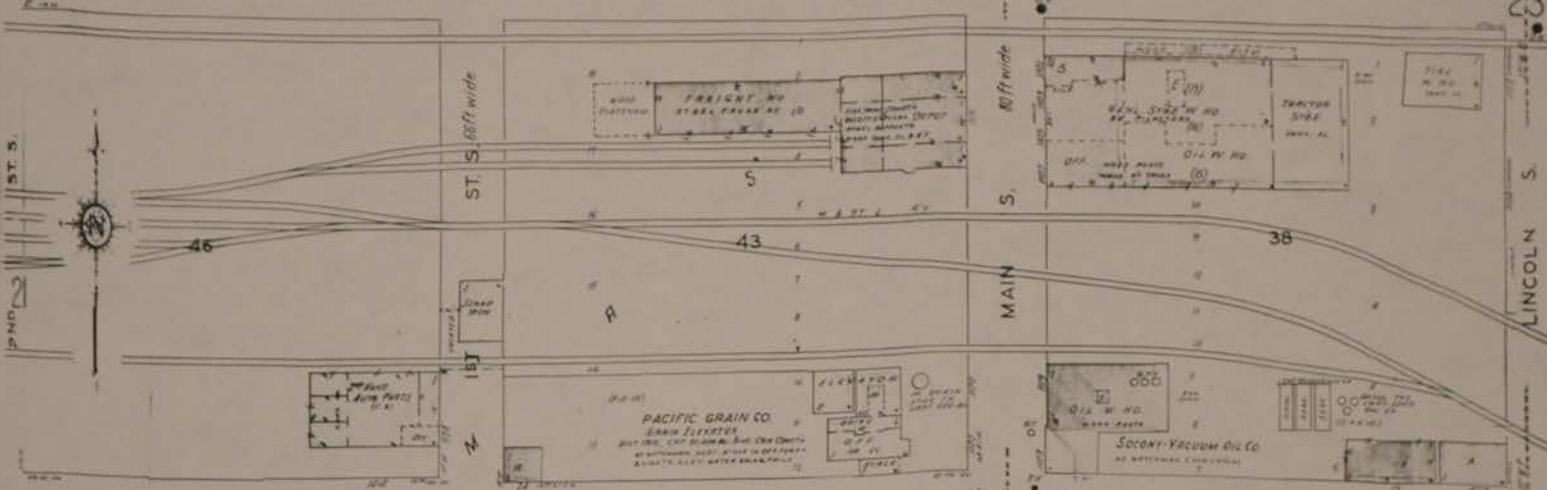
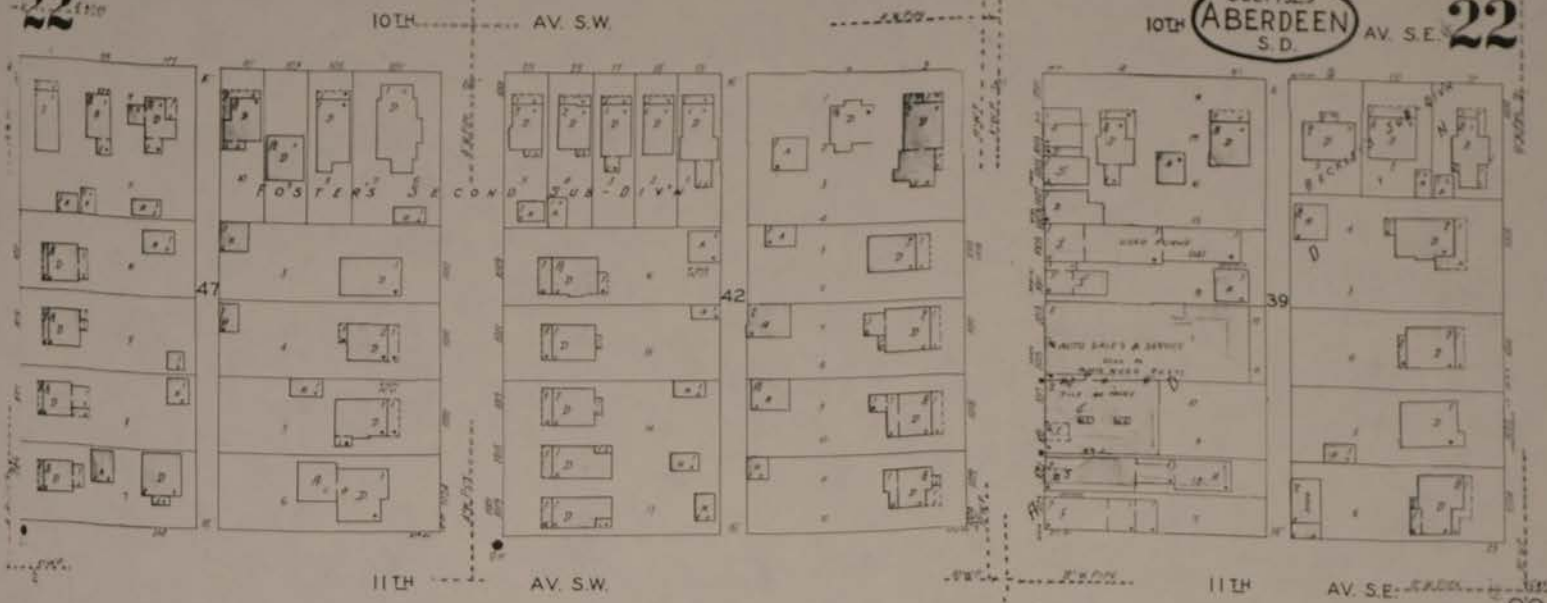


3RD ST. S.

22

17

JULY 1929
ABERDEEN
S. D. 22



24

23

22

18

23

JULY 1929
ABERDEEN
S. D.

19

LINCOLN S.

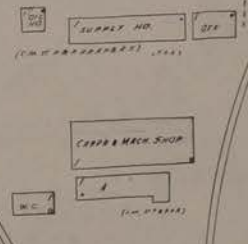
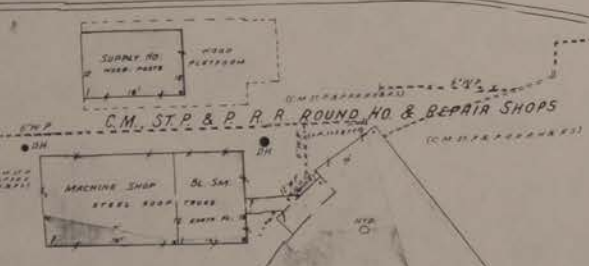
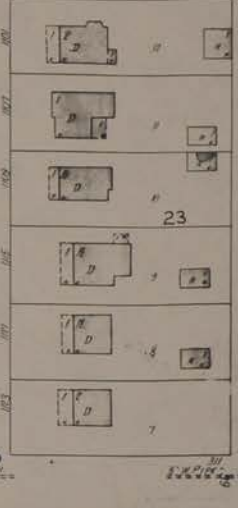
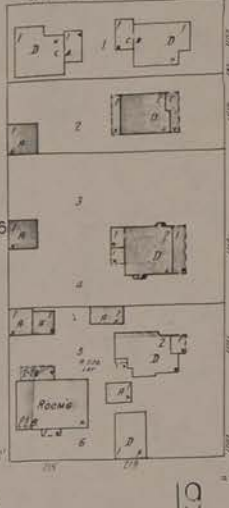
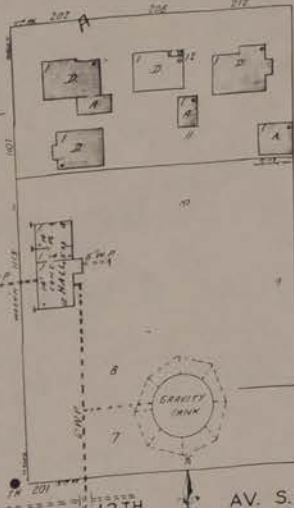
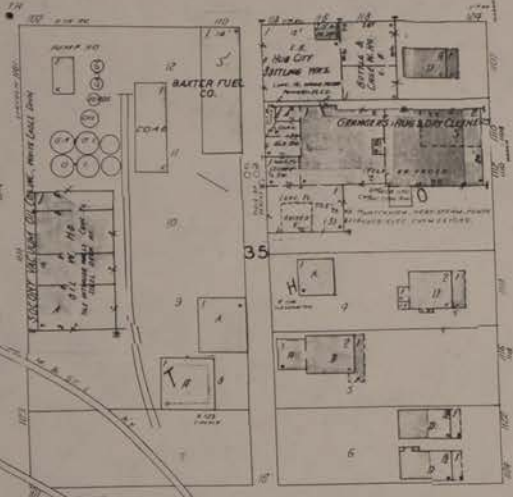
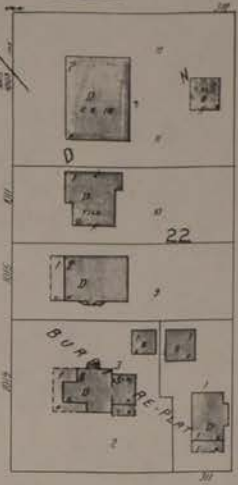
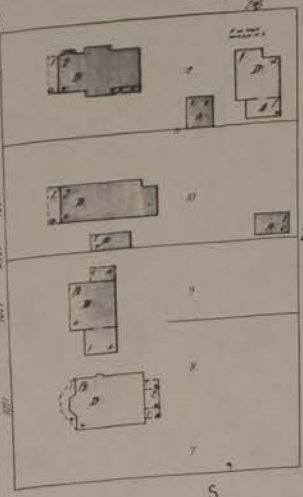
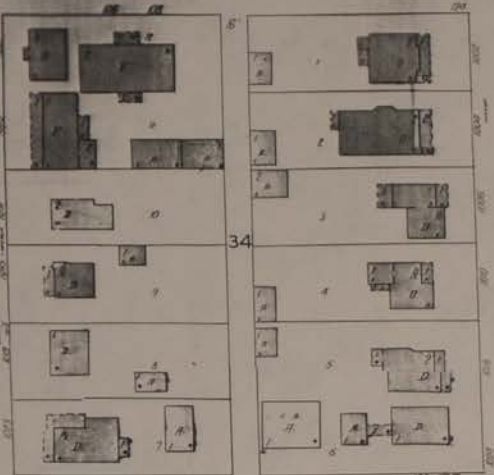
WASHINGTON S.

JAY S.

10TH AV. S.E.

11TH AV. S.E.

12TH AV. S.E.



NO WATCHMAN NEXT STEAM POWER
ELEC. CITY WATER

NO CARRIAGE WAY SIGN

CITY

SCALE 30 FT. TO ONE INCH

24

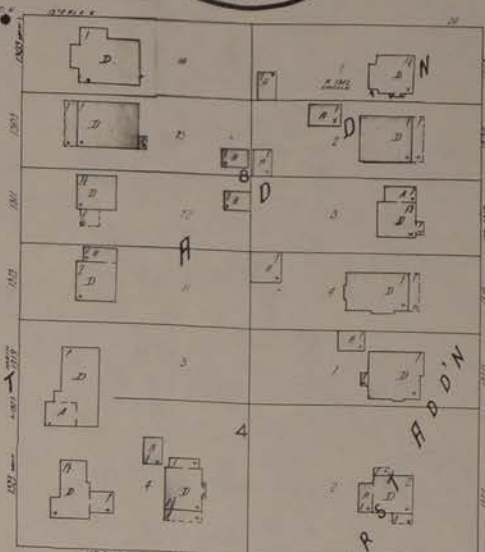
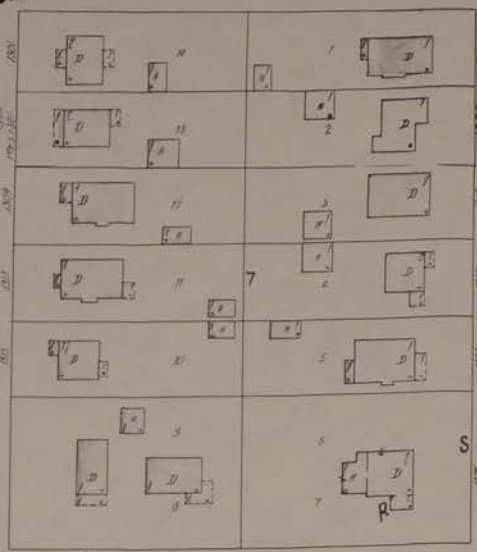
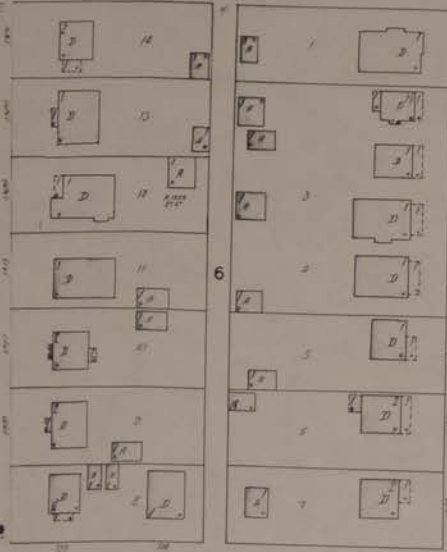
22

JULY 1929
ABERDEEN
S.D.

24

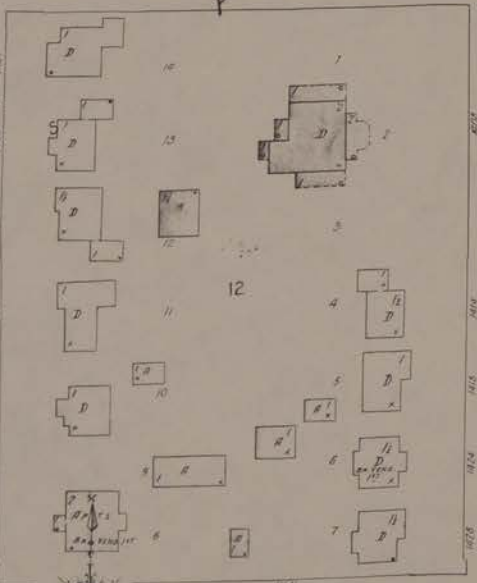
13TH AV. S.W.

13TH AV. S.E.



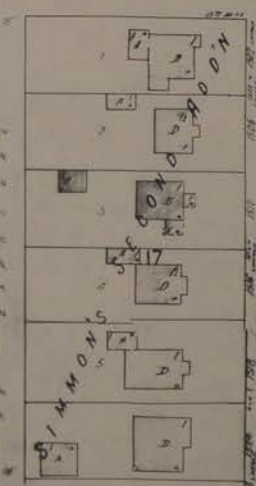
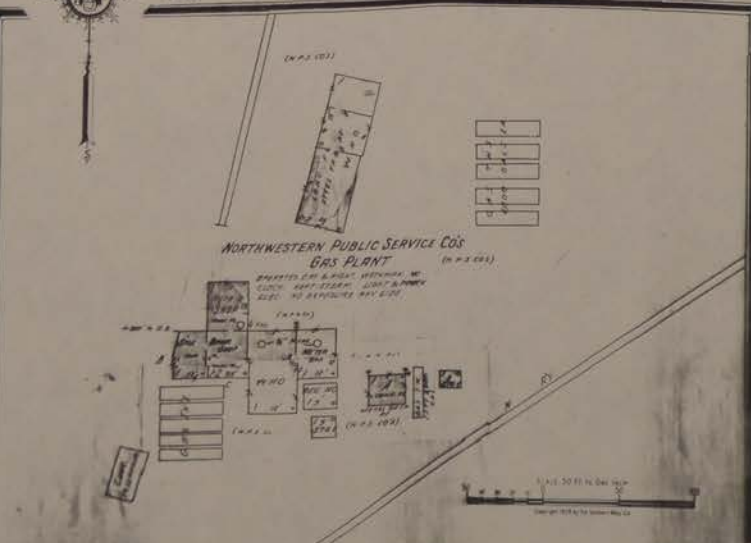
14TH AV. S.W.

14TH AV. S.E.



15TH AV. S.W.

15TH AV. S.E.



2ND ST. S.

60 FT. WIDE ST. S.W.

80 FT. WIDE ST. S.W.

LINCOLN S.

SUB-DIV'N OF SIMMONS

FIRB'DIN

ABERDEEN 50.
JULY 1929

25

NORTHWESTERN PUBLIC SERVICE CO.
ELECTRIC LIGHT & POWER PLANT OPERATOR
DAY & NIGHT - POWER & HEAT PLANTS
TRADING

SCALE 100 FT. TO AN INCH

SCALE 100 FT. TO AN INCH

23

26

27

37

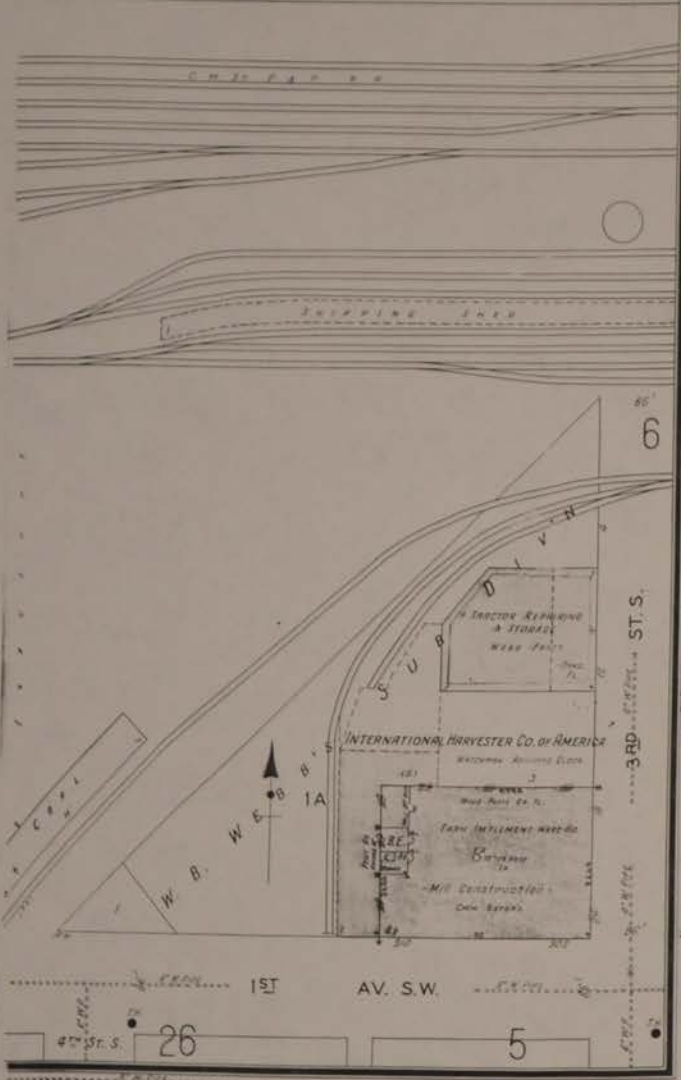
20

SCALE 100 FT. TO AN INCH



26

CM & P. R. R.

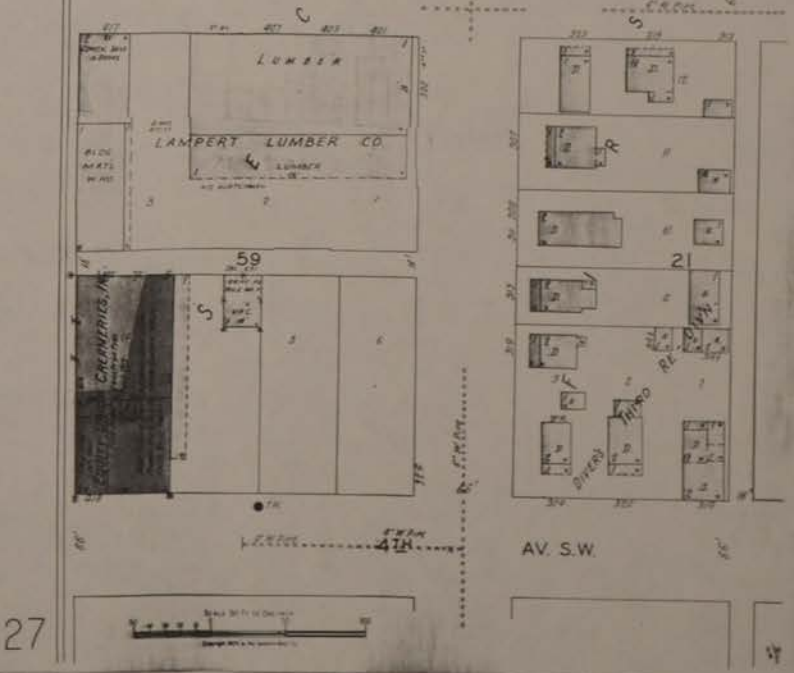
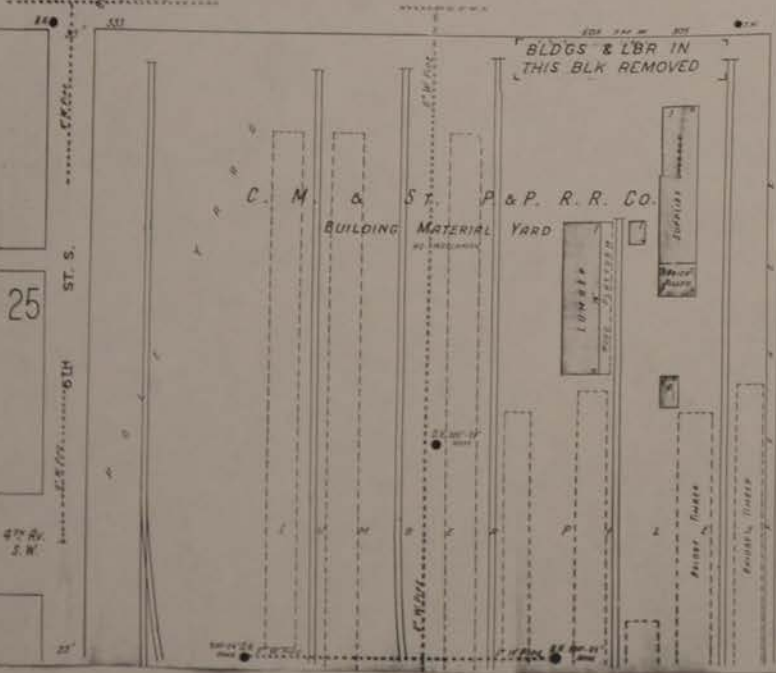
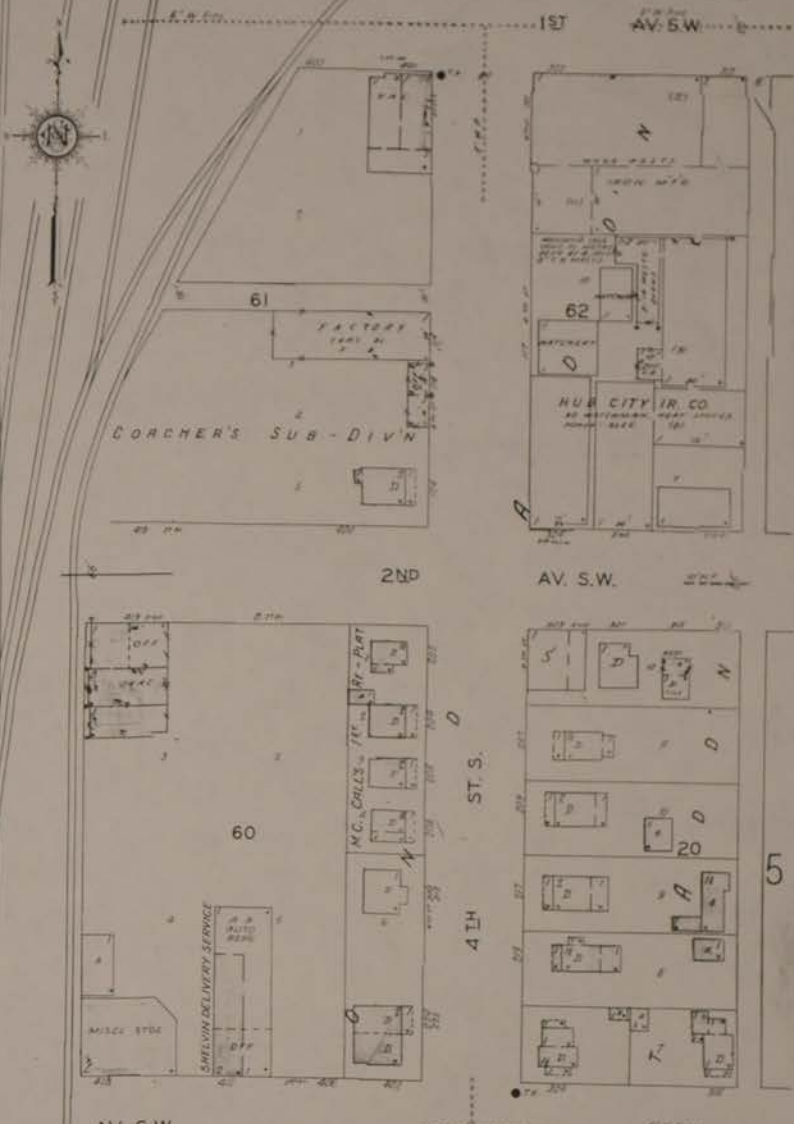


ABERDEEN, S.D.
JULY 1929

26

26

AV. S.W.



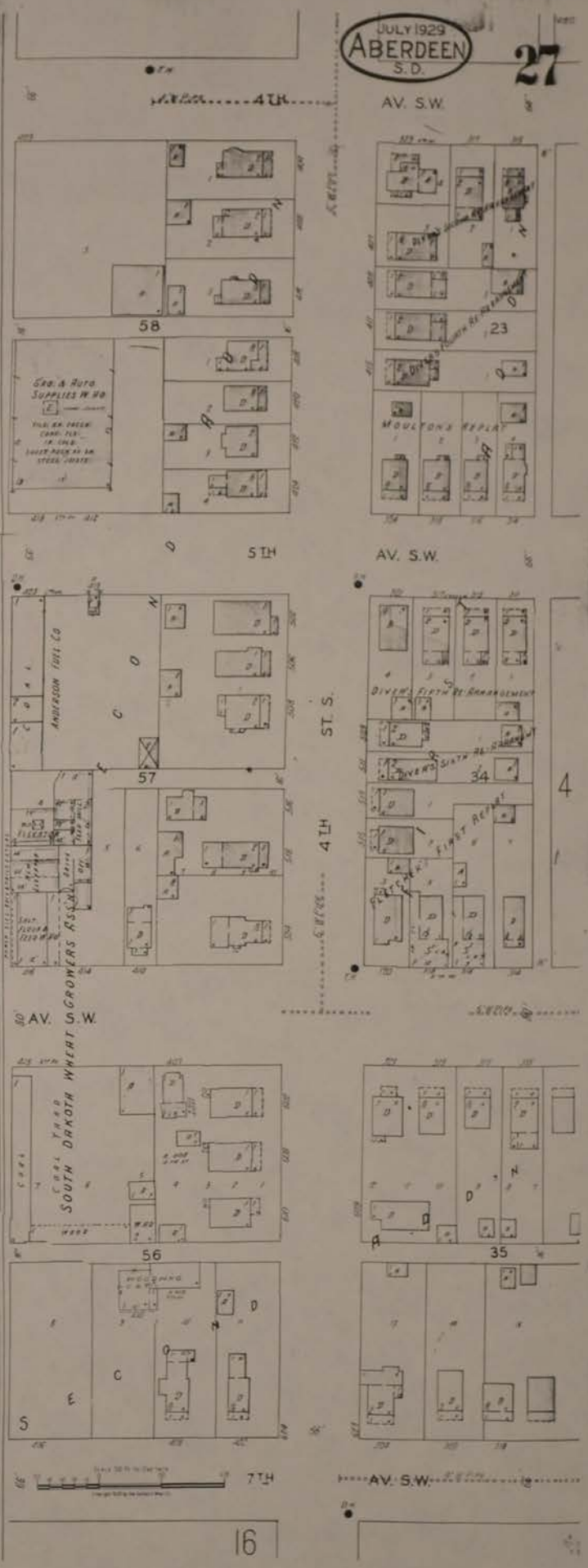
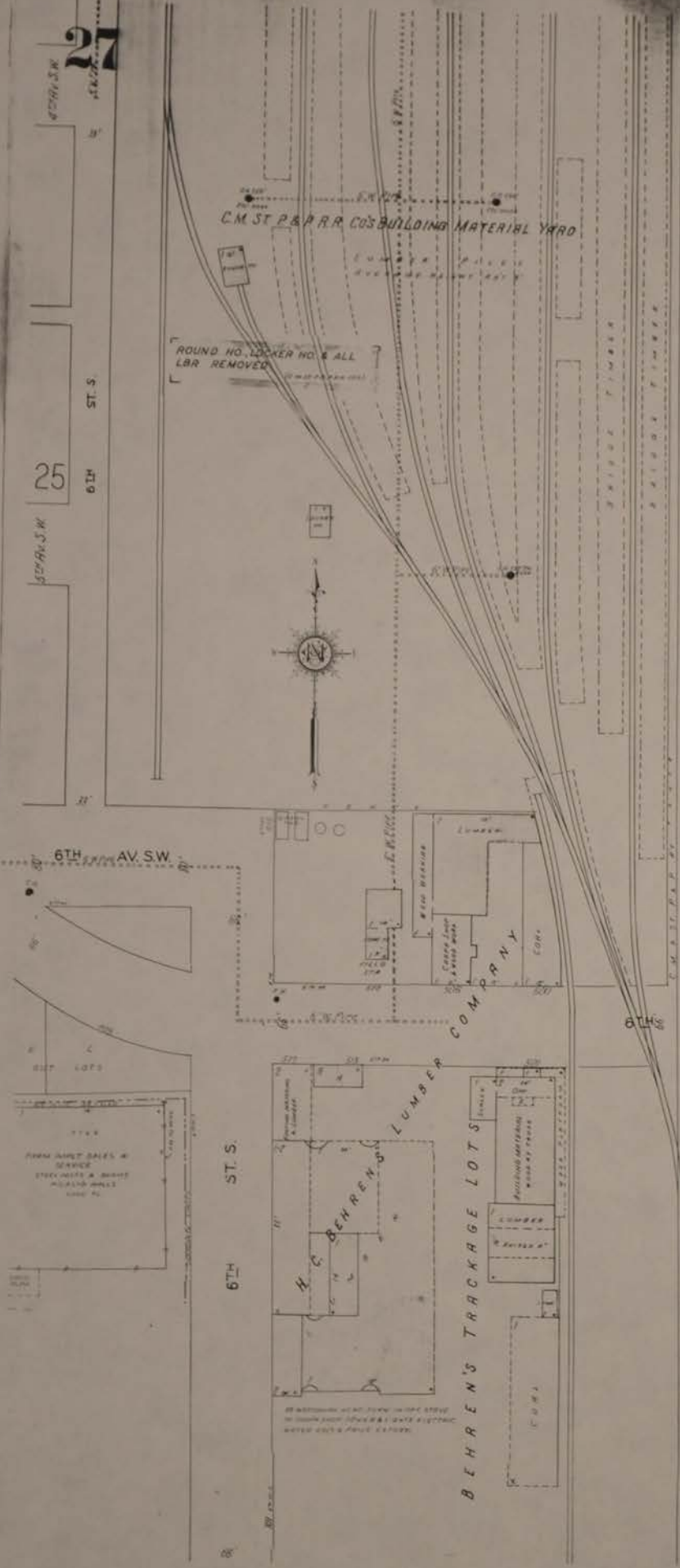
27

27

26

JULY 1929
ABERDEEN
S.D.

27



16

28

33

34

28

JULY 1929
ABERDEEN
S. D.

4TH AV. N.W.

3RD AV. N.W.

2ND AV. N.W.

1ST AV. N.W.

ST. N.

ST. N.

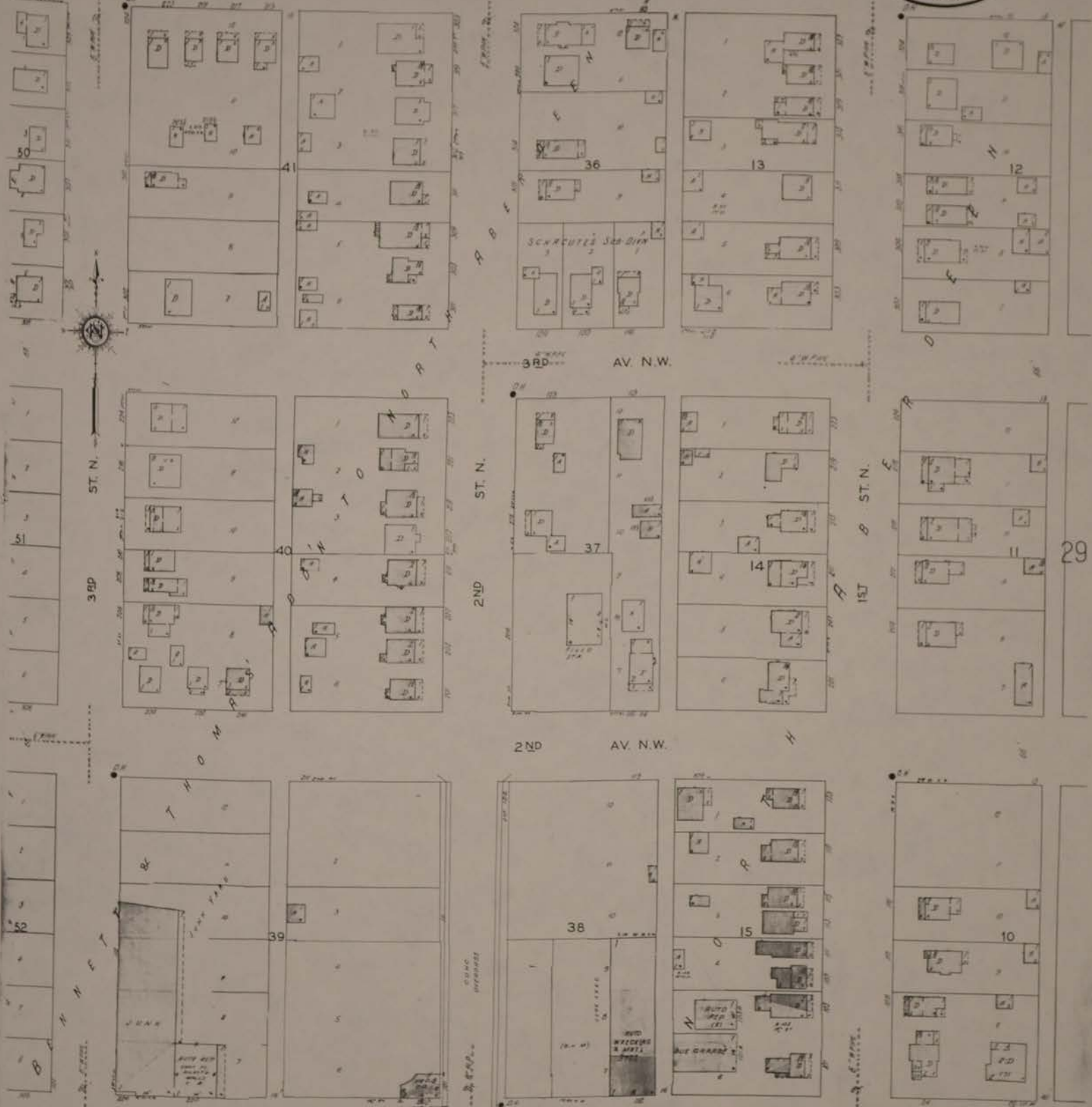
ST. N.

3RD

2ND

1ST

29



29

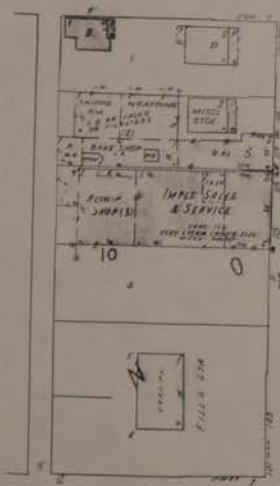
4TH AV. N.W.



3RD AV. N.W.



2ND AV. N.W.

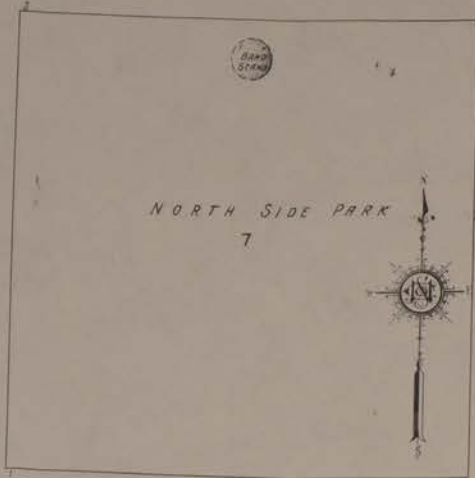


1ST AV. N.W.

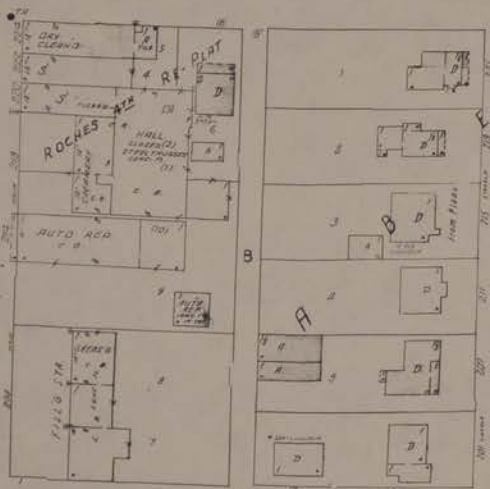
6

34

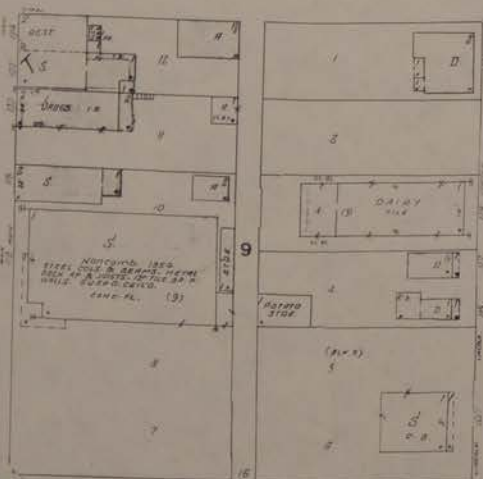
4TH



3RD



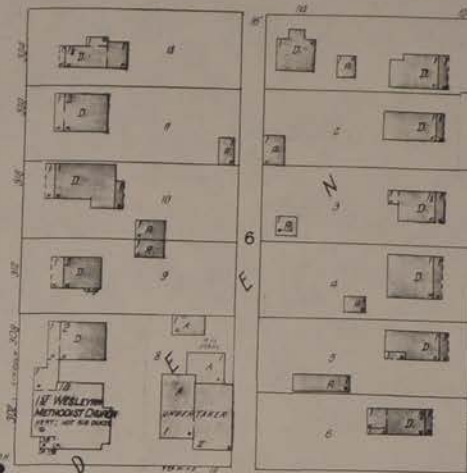
2ND



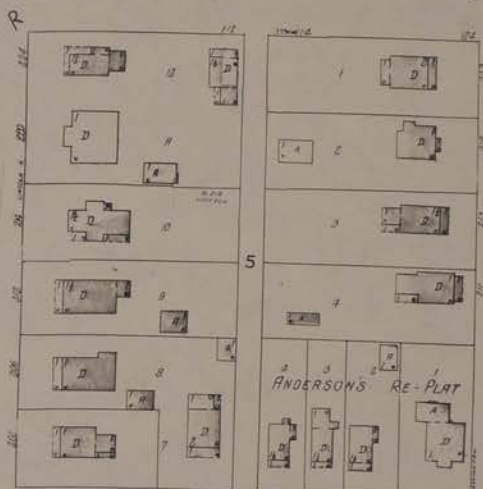
1ST

35

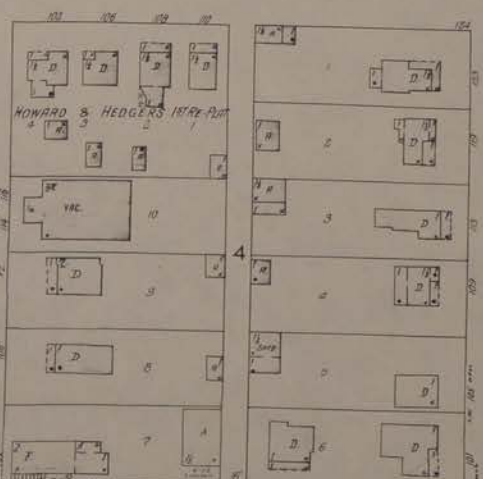
AV. N.E.



AV. N.E.



AV. N.E.



AV. N.E.

7

29

JULY 1929
BERDEEN
S.D.

WASHINGTON

30

35

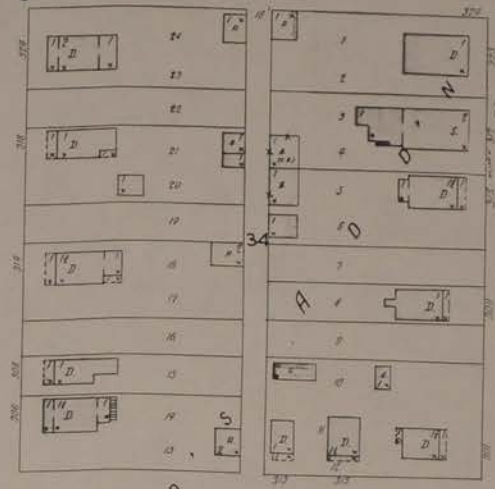
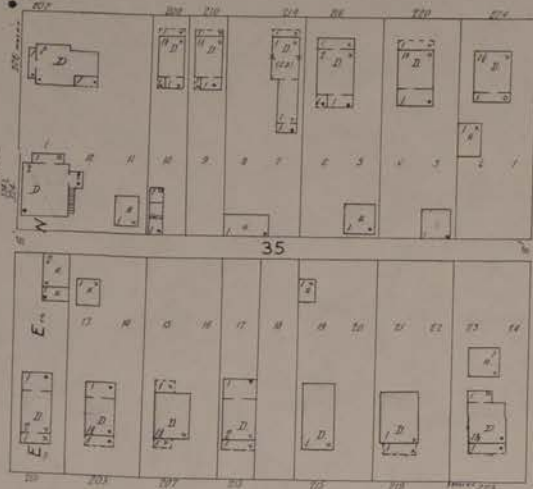
30

JULY 1929
ABERDEEN
S. D.



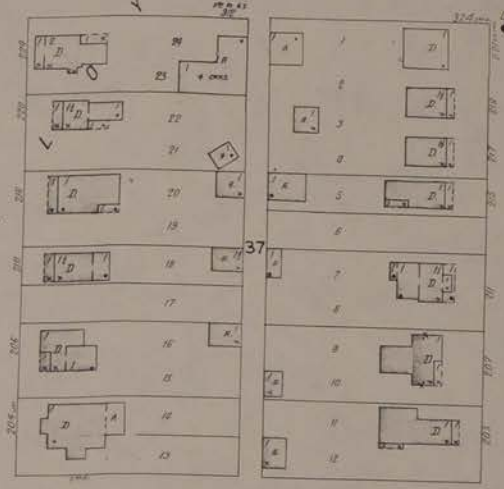
4th AV. N.E.

AV. N.E.



3rd AV. N.E.

AV. N.E.



29

WASHINGTON N.

JAY N.

KLINE N.

31

2ND AV. N.E.

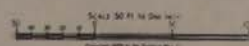
1st AV. N.E.



1st AV. N.E.

7

8



31

36

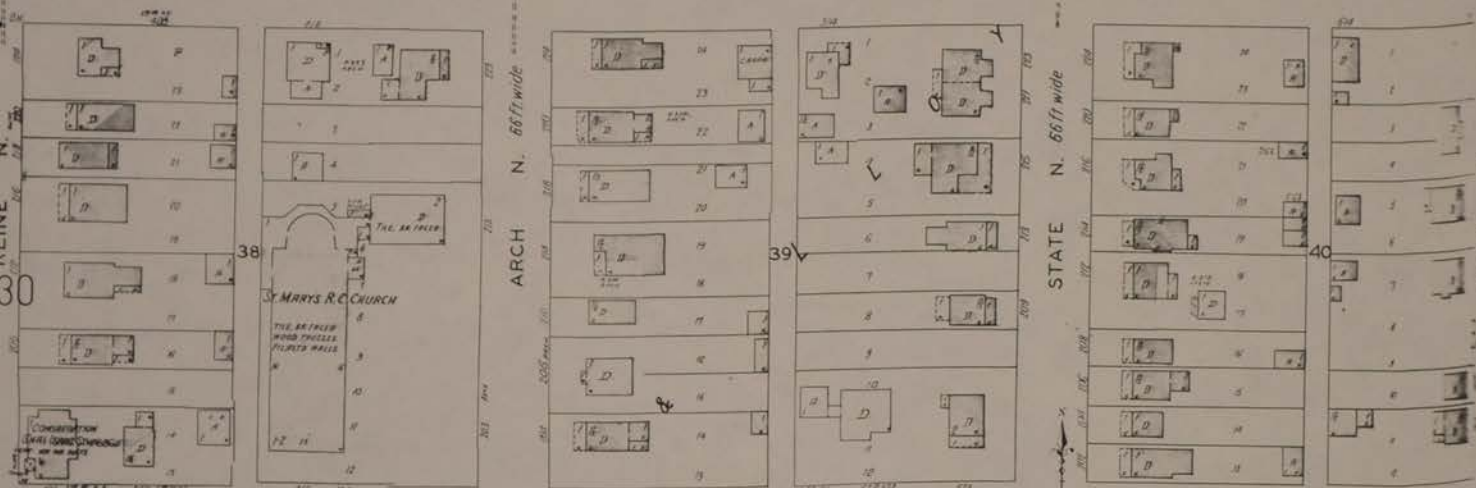
JULY 1929
ABERDEEN
S.D.

31

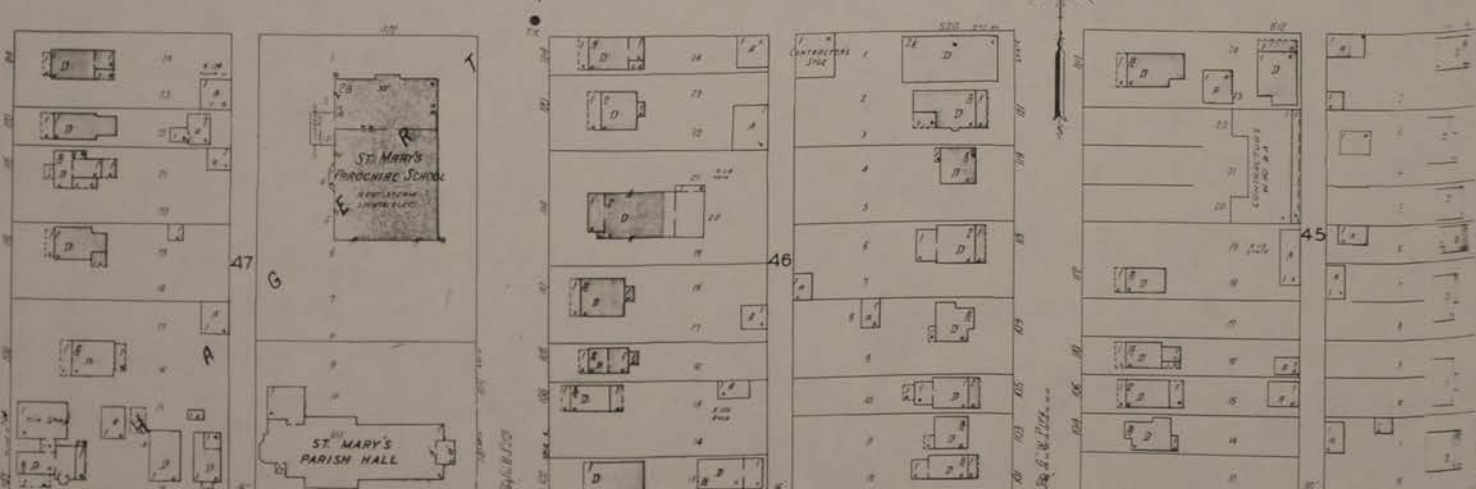
4TH AV. N.E.



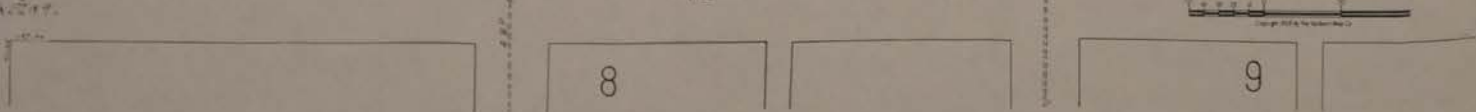
3RD AV. N.E.



2ND AV. N.E.



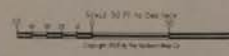
1ST AV. N.E.



KLINE N.

ARCH N. 66ft wide

STATE N. 66ft wide



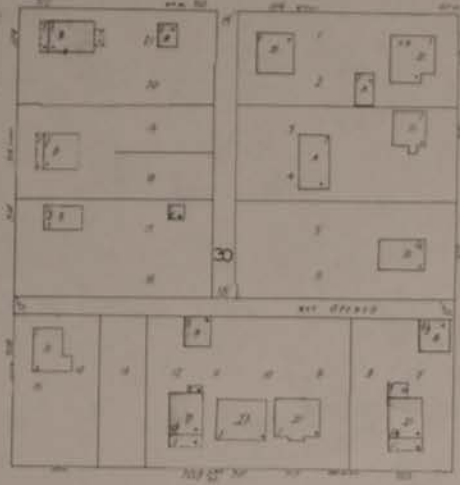
32

36

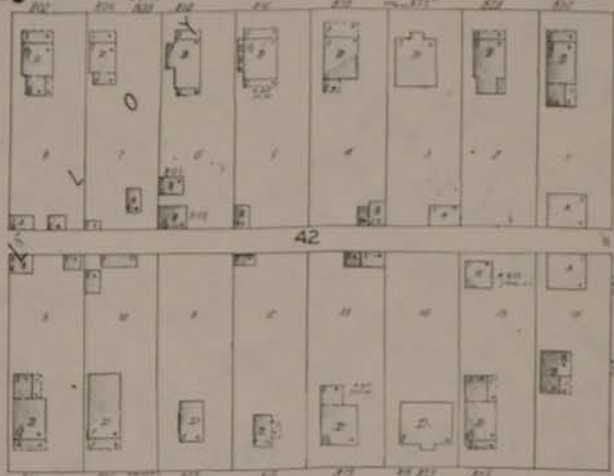
32

JULY 1929
ABERDEEN
S.D.

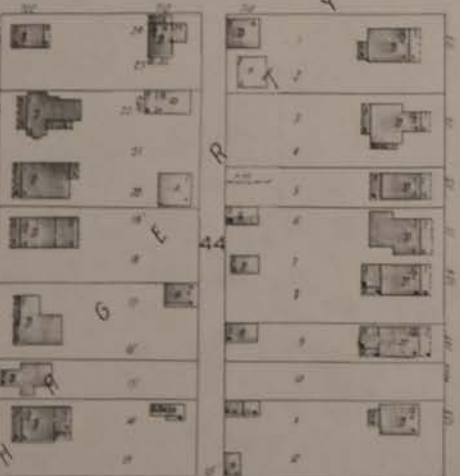
4TH AV. N.E.



3RD AV. N.E.



2ND AV. N.E.



1ST AV. N.E.

9

50

PENNSYLVANIA N.

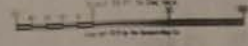
DAKOTA N.

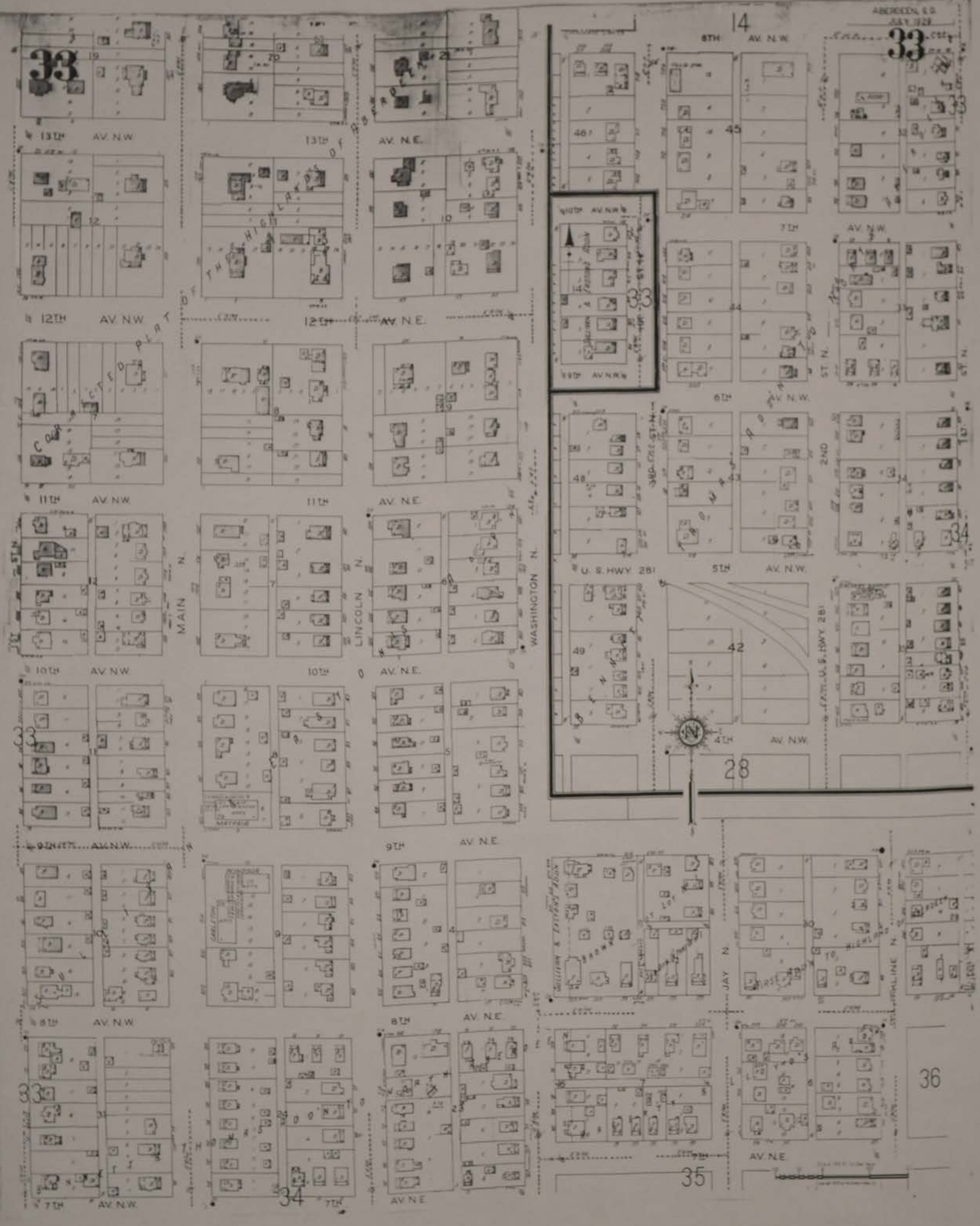
LLOYD N.

ABERDEEN
WESTERN

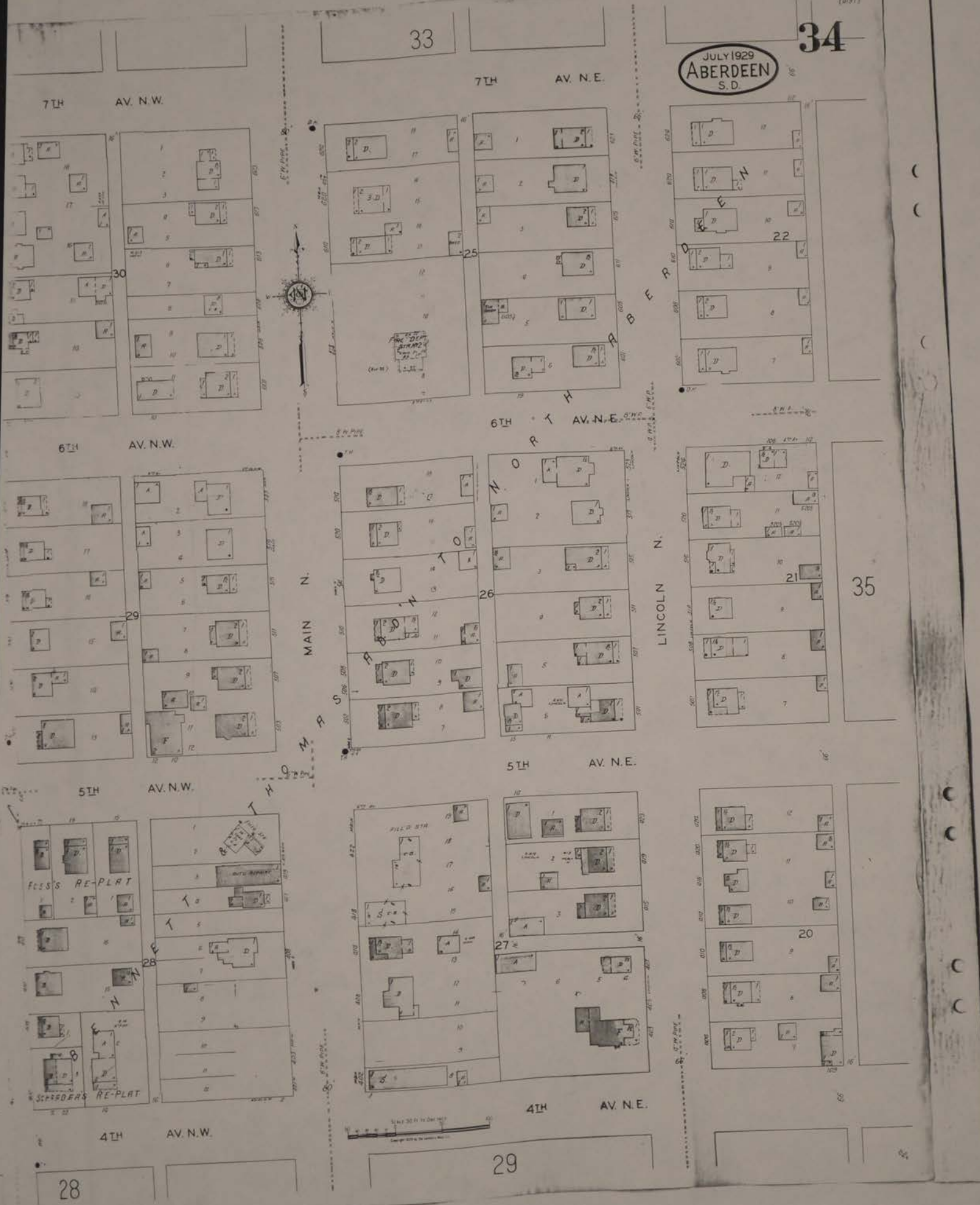
RESUBDIVN OF BLOCK TWENTY SIX
R.E. PLATT

HOWARD
RESUBDIVN OF BLOCK FORTY NINE
BERRY'S





JULY 1929
ABERDEEN
S.D.



7TH AV. N.W.

7TH AV. N.E.

6TH AV. N.W.

6TH AV. N.E.

5TH AV. N.W.

5TH AV. N.E.

4TH AV. N.W.

4TH AV. N.E.

MAIN

LINCOLN

28

29

30

25

22

29

26

21

28

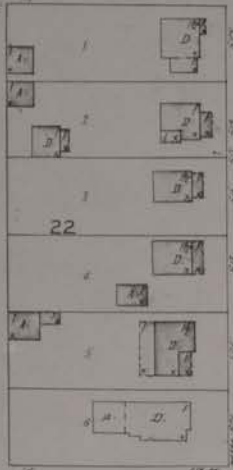
27

20

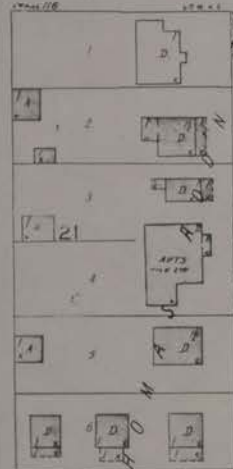
35

35

7TH AV. N.E.



6TH AV. N.E.

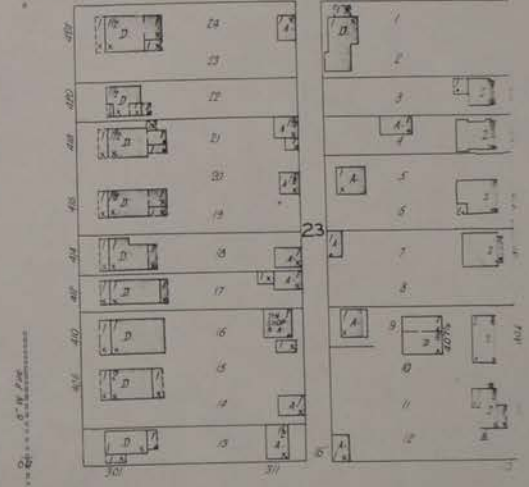
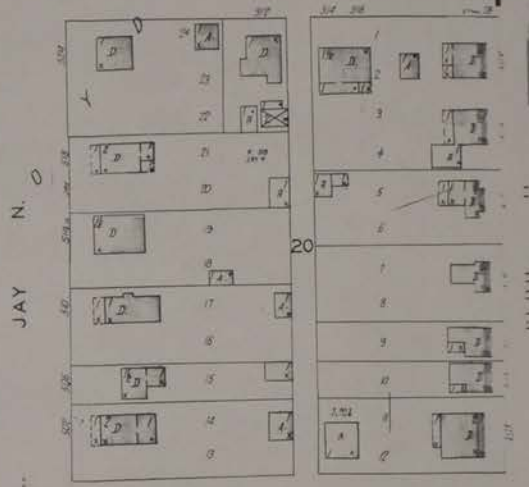
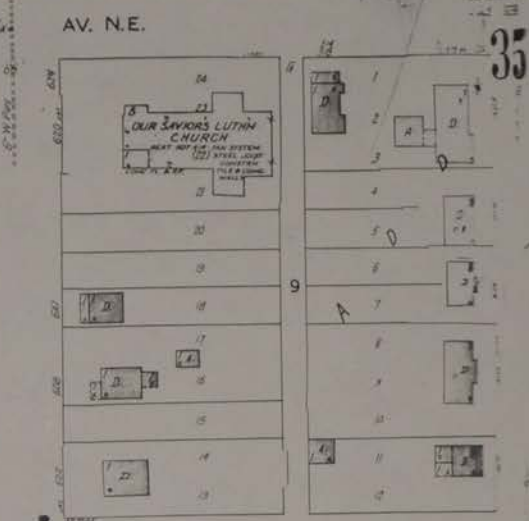
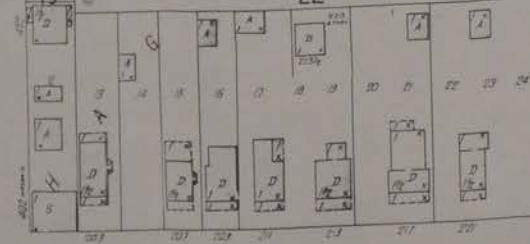
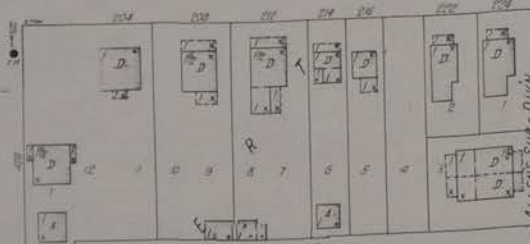
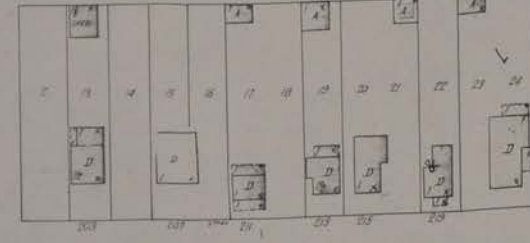
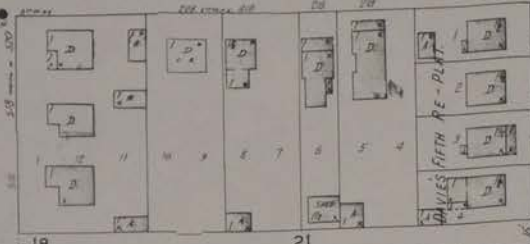
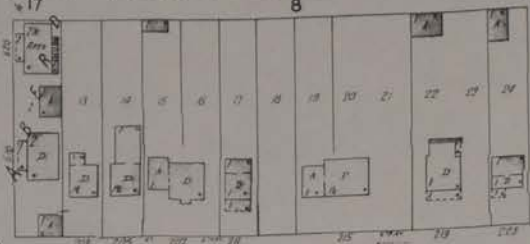


5TH AV. N.E.



4TH AV. N.E.

29



33

AV. N.E.

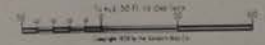
35

AV. N.E.

AV. N.E.

AV. N.E.

30



JULY 1929
ABERDEEN
S.D.

SCALE 100 FT. TO AN INCH
ENTIRE SHEET

OUTSIDE OF CORPORATE LIMITS

Located 24 Miles N. of Court St.

Located 21 Miles N. of Court St.
NO EXPOSURE AND FILL

•••••
(1444)
TRI - STATE FAIR GROUNDS
S.D. NATIONAL AND STATE FISH SHOW GROUNDS WILL
BEEN 1929-30 IN 40 AC. BLOCK 11337 AND 11338
NO 144400000 444 400

FAIRVIEW REST HOME
144445
BAOKH COUNTY FOUR FARM
144446
ALL BUILDINGS MUST BE 20 FEET FROM
LINES - ALL WITH OPEN SPACE ALL
COURT YARDS
144447
OUTSIDE OF CORPORATE LIMITS

COUNTY RD.



37

ABERDEEN, S. D.

JULY 1929

YELLOW COLOR IS OMITTED IN REPRODUCTION OF THIS ORIGINAL SURVEYING MAP SINCE IN ACCORD WITH CURRENT MAPPING PRACTICE

ABERDEEN TWP

KEELEY LBR. CO.
J. D. A. 2700 1944

OCT 1952

DANDY LIVESTOCK CO
STOCKING & FEEDERS

HUB CITY MILL

U. S. HWY NO. 12 8TH AV S W

WATTMAN'S RE-ARRANGEMENT OF OUT LOT 2

2A

3A

4A



4TH AV S W

TAUBMAN TRACT

ABERDEEN TWP

15TH ST S

14TH ST S

13TH ST S

12TH ST S

11TH ST S

5TH AV S W

U. S. HWY NE 12

8TH AV S W

13TH ST S

37

24

20

23

22

25

6A

10

C

B

T

A

16TH ST S

FARMERS LUMBER CO.

11TH AV S W

13TH ST S

11TH ST S